



hummel
SPORT
2020

SHARE THE GAME SHARE THE GAME SHARE THE GAME SHARE THE GAME SHARE THE GAME
SHARE THE GAME SHARE THE GAME SHARE THE GAME SHARE THE GAME SHARE THE GAME

SHARE THE GAME SHARE THE GAME SHARE THE GAME SHARE THE GAME SHARE THE GAME
SHARE THE GAME SHARE THE GAME SHARE THE GAME SHARE THE GAME SHARE THE GAME



hummel

CONTENT

BRAND HISTORY	04
SPONSORSHIPS	06
TECH MOVE	08
AUTHENTIC	24
CORE	44
BEE SPOKE	64
GOALKEEPER & REFEREE	68
BASE LAYER	74
LEISURE	84
- HUMMEL GO	86
- CIMA	91
- MOVE	94
- SPORT STYLE	97
- NORTH	102
SOCKS & ACCESSORIES	110
EQUIPMENT BAGS	122
HANDBALLS	130
FOOTBALLS	138
VOLLEYBALLS	148
FOOTWEAR	150
INDEX	156
PRINT GUIDE	158
SIZE CHART	159

HUMMEL BRAND HISTORY



1923

Albert Messmer develops one of the first football cleats in the world. With his brother Michael Ludwig Messmer, he founds the company Messmer & Co., that will go on to become known as hummel.

1956

The visionary Bernhard Weckenbrock takes over the company. He creates a comprehensive brand identity and introduces the chevrons.



1970

hummel is introduced to the Northern European market.

1969

The first sportswear collection is launched. Sponsorships are signed and help boost sales. A rounder version of the bumblebee than the current one is created.

1968

The first sponsorship deal is signed. The deal is with Duisburg, a team playing in the 2nd German Bundesliga.

1979

hummel signs a sponsorship deal with the Danish national team for the first time – a deal that lasts until 2004.

1988

hummel signs a sponsorship deal with Real Madrid and the club's biggest star, Emilio Butragueño. The deal makes hummel products even more popular.





→ 1999 →

hummel gets a new owner – Thornico. Christian Stadil becomes part of the brand history. He launches a reintroduced, original sport style collection on the fashion market and hummel becomes a trendsetting sports apparel brand.



1992

It's a surprising win, to say the least. The Danish national team takes the title at the European Championships having played Germany in the final.



2016

After many years hummel once again sponsors a team in the German Bundesliga. SC Freiburg plays a sensational first season after returning to the first league and qualifies for international competition.

2013

hummel celebrates its 90th birthday with the relaunch of a range of heritage styles.

2017

The Danish women's team wins silver at the Women's Euro Championship in the Netherlands, losing to the Netherlands in the final.



2018

hummel signs a sponsorship deal with Scottish giants Rangers F.C. – the club with the most league titles in the world. From hummels perspective, the deal marks a renewed focus on football in the UK.

2019

In 2019, hummel substantiates its status as an original handball brand by signing the German handball club, THW Kiel – unarguably one of the biggest clubs in the World.





SHARE THE GAME



1000+ SPONSORSHIPS

hummel is proud to sponsor a powerful, inspiring and unparalleled roster of teams, clubs and players in countries all over the world. Together, they form #teammummel – and in different ways, they bring character, strong social values, and commitment to the game. To bring some of our key collections to life, we have visited 11 of the clubs we sponsor – and at hummel, we work hard to create even closer relationships with all partners in the years to come.

THW KIEL

In the summer of 2019 hummel proudly welcomed one of the World's biggest handball clubs, THW Kiel, to the growing hummel handball family. With 20 Bundesliga titles, 11 German Cup titles, 3 Champions League titles and 4 EHF Cup titles, THW Kiel is one of the most successful clubs on the planet and hummel is happy to be a part of a new journey with the club. The THW Kiel partnership cements hummel as the original handball brand and strengthens the visibility of the famous hummel chevrons on handball courts all over Europe. The future is black and white!



SHARE
THE
GAME



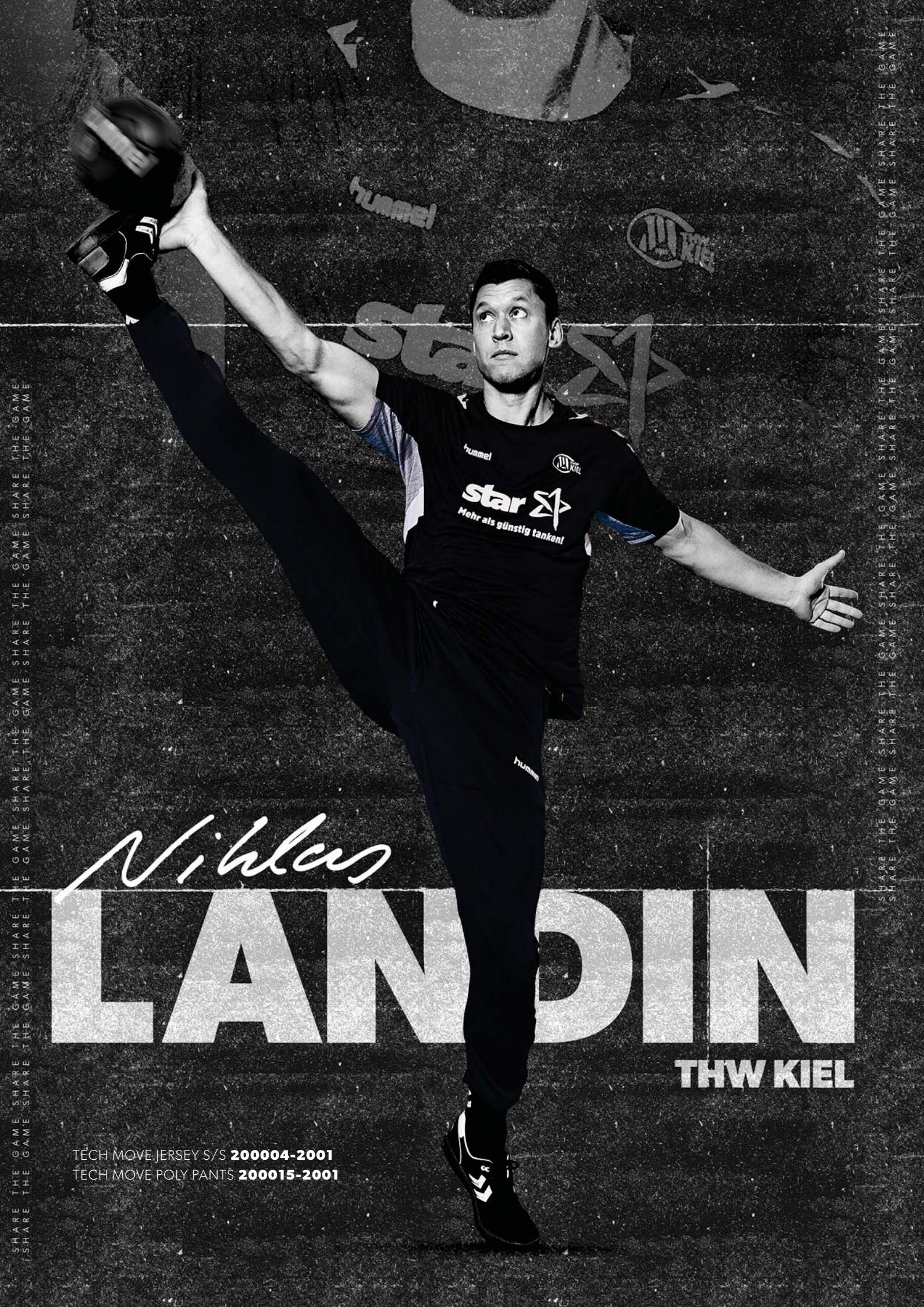
SC BRAGA

Sporting Clube de Braga has played a significant role in Portuguese and European football since the club was founded in 1921, and from the 2019/2020 season hummel is proud and humble to be a part of the future of SC Braga. From now on, when the players of SC Braga enters the pitch at the impressive and iconic Estádio Municipal de Braga, the famous red and white Braga-kits will be decorated with hummel chevrons on the shoulders. Together, hummel and SC Braga are ready to challenge the standards in Portuguese football.



SHARE
THE
GAME





SHARE THE GAME SHARE THE GAME SHARE THE GAME SHARE THE GAME
SHARE THE GAME SHARE THE GAME SHARE THE GAME SHARE THE GAME

SHARE THE GAME SHARE THE GAME SHARE THE GAME SHARE THE GAME
SHARE THE GAME SHARE THE GAME SHARE THE GAME SHARE THE GAME

Niklas

LANDIN

THW KIEL

TECH MOVE JERSEY S/S 200004-2001
TECH MOVE POLY PANTS 200015-2001

TECH MOVE



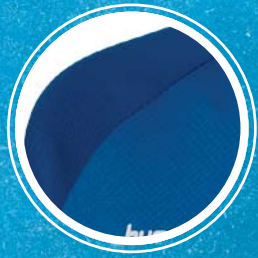
COLLECTION RUNNING FROM 2018-2020

- **Lightweight materials with second skin comfort**
- **High-performance functions and benefits**
- **All-weather designs**
- **Increased functionality**

Tech Move is designed for high-performance team sport athletes who appreciate a combination of high functionality and modern aesthetics. It is a multi-functional performance collection that combines the functionality of lightweight fabrics with second skin

comfort. Textured chevrons and 3D signature mesh panels are integrated into the articulated seams, and as the designs are all-weather items, they reflect the inherent Danish DNA of hummel.

HALF-ZIP & PANTS FUNCTIONALITIES



Reduced top stitching

Contemporary fit to
enhance ease of movement



Articulated cut sleeves
with signature 3D mesh
panel



Integrated thumbholes

Concealed lightweight
trims and fastenings

Improved fit

RUBÉN IVÁN MARTÍNEZ ANDRADE

CLUB ATLÉTICO OSASUNA

T-SHIRT & SHORTS FUNCTIONALITIES



Clean design lines



Printed textured chevrons
with 3D effect



Side body signature
3D mesh panels

BEECOOL
Moisture
management

High density lightweight
knit and moisture wicking
abilities

OIER SANJURJO MATÉ

CLUB ATLÉTICO OSASUNA

TECH MOVE OVERVIEW

TECH MOVE
JERSEY S/S
200004/ 200005



TECH MOVE
JERSEY WOMEN S/S
200006



TECH MOVE
JERSEY L/S
200007/ 200048



TECH MOVE
POLY SHORTS
200008/ 200009



TECH MOVE
POLY SHORTS WOMEN
200010



**TECH MOVE
POLY ZIP JACKET**
200013/ 200014



**TECH MOVE
POLY HOODIE**
200017/ 200018



**TECH MOVE
HALF ZIP SWEATSHIRT**
200011/ 200012



**TECH MOVE
ZIP HOOD**
200019/ 200020



**TECH MOVE
TRAINING SHORTS**
200025/ 200026



**TECH MOVE
POLY PANTS**
200015/ 200016



**TECH MOVE
FOOTBALL PANTS**
200021/ 200022



**TECH MOVE
FUNCTIONAL LIGHT WEIGHT JACKET**
200646/ 201000



**TECH MOVE
ALL WEATHER JACKET**
200027/ 200028



**TECH MOVE
BENCH JACKET**
200029



TECH MOVE JERSEY S/S

- 100% polyester
- Knit fabric
- Rib crew neck
- Signature mesh side panels and signature label

- Textured printed chevrons and printed logo
- Regular fit
- BeeCool

200005 : 116 128 140 152 164 176
200004 : S M L XL 2XL 3XL

DKK 229,95
DKK 249,95



TECH MOVE JERSEY L/S

- 100% Polyester
- Knitted fabric
- Rib crew neck
- Signature mesh side panels and label

- Textured printed chevrons and printed logo
- Regular fit
- BeeCool

200048 : 116 128 140 152 164
200007 : S M L XL 2XL 3XL

DKK 279,95
DKK 299,95



TECH MOVE POLY SHORTS

- 100% Polyester
- Knitted fabric
- Signature mesh side panels and label
- Inner briefs only in color 9001
- Textured printed chevrons and printed logo
- Regular fit
- BeeCool

200009 : 116 128 140 152 164
200008 : S M L XL 2XL 3XL

DKK 199,95
DKK 229,95



TECH MOVE JERSEY WOMAN S/S

- 100% Polyester
- Knitted fabric
- Rib crew neck
- Signature mesh side panels and label

- Textured printed chevrons and printed logo
- Regular fit
- BeeCool

200006 : XS S M L XL 2XL

DKK 249,95



TECH MOVE POLY SHORTS WOMAN

- 100% Polyester
- Knitted fabric
- Signature mesh side panels and label
- Inner briefs only in color 9001
- Textured printed chevrons and printed logo
- Regular fit
- BeeCool

200010 : XS S M L XL 2XL

DKK 229,95



TECH MOVE POLY ZIP JACKET

- 100% Polyester
- Knitted fabric
- Integrated thumbholes
- Signature mesh side panels and label
- Textured printed chevrons and printed logo
- Regular fit

200014 : 116 128 140 152 164
200013 : S M L XL 2XL 3XL

DKK 329,95
DKK 379,95



2001 BLACK 3062 TRUE RED 6100 SPORTS GREEN 7045 TRUE BLUE 8744 SARGASSO SEA 9001 WHITE



TECH MOVE POLY HOODIE

- 95% polyester, 5% Elastane
- Integrated thumbholes
- Signature mesh side panels and label
- Textured printed chevrons and printed logo
- Regular fit

200018 : 116 128 140 152 164
200017 : S M L XL 2XL 3XL

DKK 349,95
DKK 399,95



2001 BLACK 2006 GREY MELANGE 3062 TRUE RED 7045 TRUE BLUE



TECH MOVE HALF ZIP SWEATSHIRT

- 100% polyester
- Texture knitted fabric
- Integrated thumbholes
- Signature mesh side panels and label
- Textured printed chevrons and printed logo
- Regular fit

200012 : 116 128 140 152 164
200011 : S M L XL 2XL XS

DKK 349,95
DKK 399,95



2001 BLACK 2006 GREY MELANGE 3062 TRUE RED 6100 SPORTS GREEN 6102 EVENING PRIMROSE 7045 TRUE BLUE 8445 MARINE MELANGE 8744 SARGASSO SEA



TECH MOVE ZIP HOOD

- 95% polyester, 5% elastane
- Integrated thumbholes
- Signature mesh side panels and label
- Textured printed chevrons and printed logo
- Regular fit

200020 : 116 128 140 152 164
200019 : S M L XL 2XL 3XL

DKK 399,95
DKK 449,95



2001 BLACK 2006 GREY MELANGE 3062 TRUE RED 7045 TRUE BLUE



TECH MOVE TRAINING SHORTS

- 92% polyester, 8% elastane
- 4-ways stretch woven fabric
- Signature mesh leg panels and signature label
- Front zip pockets
- Textured printed chevrons and printed logo
- Regular fit

200026 : 116 128 140 152 164
200025 : S M L XL 2XL

DKK 279,95
DKK 299,95



2001
BLACK

8744
SARGASSO SEA



TECH MOVE POLY PANTS

- 100% Polyester
- Knitted fabric
- Invisible zip pockets
- Signature mesh side panels and label
- Textured printed chevrons and printed logo
- Regular fit

200016 : 116 128 140 152 164
200015 : S M L XL 2XL 3XL

DKK 249,95
DKK 299,95



2001
BLACK

8744
SARGASSO SEA



TECH MOVE FOOTBALL PANTS

- 100% polyester
- Rib at back calf panels
- Invisible zip pockets
- Signature mesh side panels and label

- Textured printed chevrons and printed logo
- Textured mesh back yoke
- Regular fit

200022 : 116 128 140 152 164
200021 : S M L XL 2XL

DKK 249,95
DKK 299,95



2001
BLACK

8744
SARGASSO SEA



TECH MOVE FUNCTIONAL LIGHT WEIGHT JACKET

- 100% polyester
- Woven fabric
- Mini ripstop, semi transparent
- Invisible zip pockets
- Textured printed chevrons and printed logo
- Regular fit
- Fluorine free water repellent

201000 : 116 128 140 152 164
200646 : S M L XL 2XL

DKK 499,95
DKK 599,95



1524
MICROCHIP

2001
BLACK

3062
TRUE RED

6102
EVENING PRIMROSE

7045
TRUE BLUE



TECH MOVE ALL WEATHER JACKET

- 100% polyester
- Stretch woven fabric with membrane
- Storm cuffs
- Underarm ventilation
- Textured printed chevrons and printed logo
- Regular fit
- Ventilation
- Fluorine free water repellent

200028 : 116 128 140 152 164
200027 : S M L XL 2XL

DKK 699,95
DKK 749,95



2001
BLACK



TECH MOVE BENCH JACKET

- 100% polyester
- Woven fabric
- Quilted padding
- Storm cuff
- Invisible zip pockets
- Textured printed chevrons and printed logo
- Regular fit
- Fluorine free water repellent

200029 : S M L XL 2XL 3XL

DKK 899,95



2001
BLACK

8744
SARGASSO SEA





SHARE
THE
GAME



Tech Move Jersey S/S **200004**
& Tech Move Poly Shorts **200008**



Tech Move Half Zip Sweatshirt **200011**



Tech Move Jersey S/S **200004**



Tech Move Half Zip Sweatshirt **200011**
& Tech Move Poly Shorts **200008**



SHARE
THE
GAME



Tech Move Jersey S/S **200004**



Tech Move Jersey S/S **200004**



Tech Move Jersey S/S **200004**



Tech Move Jersey S/S **200004**



SHARE
THE
GAME



Tech Move Jersey S/S **200004**
& Tech Move Poly Pants **200015**

HMLAUTHENTIC POLY JERSEY S/S 204919

HMLAUTHENTIC POLY SHORTS 204924



Philipp
LIEKEKEHART
SC FREIBURG

AUTHENTIC



COLLECTION RUNNING FROM 2020-2023

- Streamlined designs with functional details
- Lightweight performance fit and maximum ventilation
- Focus on speed and ease of movement
- Weather protection for comfort

The hummel Authentic collection is a multifunctional team sport collection offering a wide range of styles for every kind of training on all levels and for all purposes - be it competition, training or play. The design is inspired by the classic hummel heritage, but with a modern twist.

Made from comfortable fabrics and designed with a performance fit, the styles are developed to enhance comfort for team sport athletes on all levels. With features such as moisture management, light weight dual faced knits and faux silicon print, the collection offers optimal conditions for the players.

SHORTS & T-SHIRT FUNCTIONALITIES



Modern neck construction
in contrast colour

Iconic hummel bee logo in
contrast colours

BEE COOL
Moisture
management



Modern textured
chevron tape with a
clear heritage reference



MARIT RØSBERG JACOBSEN
TEAM ESBJERG

AUTHENTIC OVERVIEW

HMLAUTHENTIC PRO JERSEY S/S
204602



HMLAUTHENTIC PRO SEAMLESS JERSEY S/S
206536



HMLAUTHENTIC PRO HALF ZIP SWEAT
204605



HMLAUTHENTIC PRO JACKET
204606



HMLAUTHENTIC PRO WOVEN SHORTS
204603



HMLAUTHENTIC PRO FOOTBALL PANT
204607



HMLAUTHENTIC PRO ZIP HOODIE
204614



HMLAUTHENTIC POLY JERSEY S/S
204919/204920



HMLAUTHENTIC POLY SHORTS
204924/204925



HMLAUTHENTIC POLY JERSEY WOMAN S/S
204921



HMLAUTHENTIC POLY SHORTS WOMAN
204926



HMLAUTHENTIC HALF ZIP SWEATSHIRT
204927/204928



HMLAUTHENTIC HALF ZIP SWEATSHIRT WOMAN
204929



HMLAUTHENTIC POLY ZIP JACKET
205366/205367



HMLAUTHENTIC POLY ZIP JACKET WOMAN
205368



HMLAUTHENTIC
POLY JERSEY L/S
204922/204923



HMLAUTHENTIC
TRAINING PANT
204933/204934



HMLAUTHENTIC
POLY PANT
205369/205370



HMLAUTHENTIC
3/4 PANT
205371/205372



HMLAUTHENTIC
POLY HOODIE
204930/204931



HMLAUTHENTIC
POLY HOODIE WOMAN
204932



HMLAUTHENTIC
POLY ZIP HOODIE
204937/204938



HMLAUTHENTIC
POLY ZIP HOODIE WOMAN
204939



HMLAUTHENTIC
TRAINING SWEAT
205373/205374



HMLAUTHENTIC
MICRO JACKET
205375/205376



HMLAUTHENTIC
MICRO PANT
205377/205378



HMLAUTHENTIC
SWEAT PANT
205385/205386



HMLAUTHENTIC
TRAINING TEE
205379/205380



HMLAUTHENTIC
FUNCTIONAL POLO
205382



HMLAUTHENTIC WOMAN
FUNCTIONAL POLO
205384



HMLAUTHENTIC
TRAINING SHORT
205388/205389



HMLAUTHENTIC
TRAINING JACKET
204935/204936



HMLAUTHENTIC
WINDBREAKER
205360/205367



HMLAUTHENTIC
BENCH JACKET
205362/205363



HMLAUTHENTIC
ALL-WEATHER JACKET
205364/205365



HMLAUTHENTIC PRO JERSEY S/S

- 100% polyester
- Jersey fabric with structure
- Waterbased printed logo and chevrons
- Regular fit
- BeeCool



204602 : S M L XL 2XL

DKK 349,95



2267
ANTHRACITE



3782
CHILI PEPPER



8745
CELESTIAL

HMLAUTHENTIC PRO SEAMLESS JERSEY S/S

- 79% polyester, 21% polyamide
- Stretchable fabric
- Knitted logo and chevrons
- Tight fit
- Seamless
- BeeCool



206536 : XS S M L XL 2XL

DKK 349,95



2267
ANTHRACITE



3782
CHILI PEPPER



8745
CELESTIAL

HMLAUTHENTIC PRO WOVEN SHORTS

- 88% polyester 12% elastane
- Stretchable woven fabric
- Waterbased printed logo and chevrons
- Engineered waistband with drawcord
- Regular fit



204603 : S M L XL 2XL

DKK 349,95



2267
ANTHRACITE



8745
CELESTIAL

HMLAUTHENTIC PRO HALF ZIP SWEAT

- 90% polyester 10% elastane
- Knitted fabric
- Waterbased printed logo and chevrons
- Regular fit

204605 : S M L XL 2XL

DKK 599,95



2267
ANTHRACITE

3782
CHILI PEPPER

8745
CELESTIAL



HMLAUTHENTIC PRO ZIP HOODIE

- 100% polyester
- Knitted fabric
- Sweat fabric
- Zipper pockets
- Rubber printed logo and chevrons
- Elastic binding at hem and cuff
- Regular fit

204614 : S M L XL 2XL

DKK 599,95



2006
GREY MELANGE

2508
BLACK MELANGE

3782
CHILI PEPPER

8747
CELESTIAL MELANGE



HMLAUTHENTIC PRO FOOTBALL PANT

- Main: 90% polyester, 10% elastane / Insert: 86% nylon, 14% elastane
- Knitted fabric
- Main: Stretchable fabric / Insert at calf: mesh fabric
- Mesh at back leg

- Waterbased printed logo and chevrons
- Engineered waistband with drawcord
- Performance fit
- Slim fit

204607 : S M L XL 2XL

DKK 499,95



2267
ANTHRACITE



HMLAUTHENTIC PRO JACKET

- 100% polyester
- Woven fabric
- Waterbased printed logo and chevrons
- WP5000
- Elasticated inserts at hem and cuff

- Zipper pockets
- Regular fit
- Fluorine free water repellent

204606 : S M L XL 2XL

DKK 699,95



2267
ANTHRACITE

3782
CHILI PEPPER

8745
CELESTIAL



HMLAUTHENTIC POLY JERSEY S/S

- 100% polyester
- Jersey fabric
- Waterbased printed logos
- Textured woven chevron tapes

- 2114, 3062 & 7045 available in 4XL
- UEFA approved standard for logo placement
- Regular fit
- BeeCool

204920 : 116 128 140 152 164 176
204919 : S M L XL 2XL 3XL 4XL

DKK 179,95
DKK 199,95



1525
ASPHALT



2006
GREY MELANGE



2114
BLACK/
WHITE



3062
TRUE RED



3098
LAVENDULA



5006
TANGERINE



5115
SPORTS YELLOW/
BLACK



5167
SPORTS YELLOW/
TRUE BLUE



6140
EVERGREEN



6750
GREEN GECKO



7026
MARINE



7045
TRUE BLUE



7392
BLUEBIRD



8745
CELESTIAL



9001
WHITE



9368
WHITE/
TRUE BLUE



9402
WHITE/
TRUE RED

HMLAUTHENTIC POLY JERSEY L/S

- 100% polyester
- Jersey fabric
- Waterbased printed logos
- Textured woven chevron tape
- UEFA approved standard for logo placement
- Regular fit
- BeeCool

204923 : 116 128 140 152 164 176
204922 : S M L XL 2XL 3XL

DKK 199,95
DKK 249,95



2114
BLACK/
WHITE



3062
TRUE RED



5006
TANGERINE



5115
SPORTS YELLOW/
BLACK



7045
TRUE BLUE



7392
BLUEBIRD



HMLAUTHENTIC POLY SHORTS

- 100% polyester
- Jersey fabric
- String in waistband
- Inner briefs only on color 9001

- Waterbased printed logos
- Textured woven chevron tape
- Regular fit
- BeeCool

204925 : 116 128 140 152 164 176
204924 : S M L XL 2XL 3XL

DKK 149,95
DKK 179,95



1525
ASPHALT



2114
BLACK/
WHITE



3062
TRUE RED



5006
TANGERINE



5115
SPORTS YELLOW/
BLACK



6140
EVERGREEN



6750
GREEN GECKO



7026
MARINE



7045
TRUE BLUE



7724
TRUE BLUE/
SPORTS YELLOW



8745
CELESTIAL



9001
WHITE



HMLAUTHENTIC POLY JERSEY WOMAN S/S

- 100% polyester
- Jersey fabric
- Waterbased printed logos
- Textured woven chevron tape

- UEFA approved standard for logo placement
- Regular fit
- BeeCool

204921 : XS S M L XL 2XL

DKK 199,95



1525
ASPHALT



2006
GREY MELANGE



2114
BLACK/
WHITE



3062
TRUE RED



3098
LAVENDULA



5006
TANGERINE



5115
SPORTS YELLOW/
BLACK



5167
SPORTS YELLOW/
TRUE BLUE



6140
EVERGREEN



6750
GREEN GECKO



7026
MARINE



7045
TRUE BLUE



7392
BLUEBIRD



8745
CELESTIAL



9001
WHITE



9368
WHITE/
TRUE BLUE



9402
WHITE/
TRUE RED

HMLAUTHENTIC POLY SHORTS WOMAN

- 100% polyester
- Jersey fabric
- String in waistband
- Inner briefs only on color 9001
- Waterbased printed logos

- Textured woven chevron tape
- Regular fit
- BeeCool

204926 : XS S M L XL 2XL

DKK 179,95



1525
ASPHALT



2114
BLACK/
WHITE



3062
TRUE RED



5006
TANGERINE



5115
SPORTS YELLOW/
BLACK



6140
EVERGREEN



6750
GREEN GECKO



7026
MARINE



7045
TRUE BLUE



7724
TRUE BLUE/
SPORTS YELLOW



8745
CELESTIAL



9001
WHITE



HMLAUTHENTIC HALF ZIP SWEATSHIRT

- 100% polyester
- Knitted fabric with structure
- Waterbased printed logos
- Textured woven chevron tape
- Regular fit

204928 : 116 128 140 152 164 176
204927 : S M L XL 2XL 3XL

DKK 249,95
DKK 299,95



1525
ASPHALT



2006
GREY MELANGE



2114
BLACK/
WHITE



3062
TRUE RED



6140
EVERGREEN



7026
MARINE



7045
TRUE BLUE



8745
CELESTIAL



HMLAUTHENTIC HALF ZIP SWEATSHIRT WOMAN

- 100% polyester
- Knitted fabric with structure
- Waterbased printed logos
- Textured woven chevron tape
- Regular fit

204929 : XS S M L XL 2XL

DKK 299,95



1525
ASPHALT



2006
GREY MELANGE



2114
BLACK/
WHITE



3062
TRUE RED



6140
EVERGREEN



7026
MARINE



7045
TRUE BLUE



8745
CELESTIAL



HMLAUTHENTIC POLY ZIP JACKET

- 100% polyester
- Knitted fabric
- Zipper pockets
- Rib cuff
- Waterbased printed logos
- Textured woven chevron tape
- Regular fit

205367 : 116 128 140 152 164 176
205366 : S M L XL 2XL 3XL

DKK 249,95
DKK 299,95



1525
ASPHALT



2114
BLACK/
WHITE



3062
TRUE RED



6140
EVERGREEN



7026
MARINE



7045
TRUE BLUE



8745
CELESTIAL



HMLAUTHENTIC WOMEN POLY ZIP JACKET

- 100% polyester
- Knitted fabric
- Waterbased printed logos
- Zipper pockets
- Rib cuff
- Textured woven chevron tape
- Regular fit

205368 : XS S M L XL 2XL

DKK 299,95



1525
ASPHALT



2114
BLACK/
WHITE



3062
TRUE RED



6140
EVERGREEN



7026
MARINE



7045
TRUE BLUE



8745
CELESTIAL



HMLAUTHENTIC TRAINING PANT

- 100% polyester
- Interlock fabric
- Waterbased printed logos
- Zipper pockets

- String in waistband
- Textured woven chevron tape
- Regular fit

204934 : 116 128 140 152 164 176
204933 : S M L XL 2XL 3XL

DKK 249,95
DKK 299,95



2114
BLACK/
WHITE

7026
MARINE

HMLAUTHENTIC POLY PANT

- 100% polyester
- Interlock fabric
- Waterbased printed logos
- Strings in waistband
- Zipper in leg

- 2 zipper pockets
- Textured woven chevron tape
- Regular fit

205370 : 116 128 140 152 164 176
205369 : S M L XL 2XL 3XL

DKK 249,95
DKK 299,95



2114
BLACK/
WHITE

7026
MARINE

HMLAUTHENTIC 3/4 PANT

- 100% polyester
- Interlock fabric
- Waterbased printed logos
- Zipper pockets

- String in waistband
- Textured woven chevron tape
- Regular fit

205372 : 116 128 140 152 164 176
205371 : S M L XL 2XL 3XL

DKK 249,95
DKK 249,95



2114
BLACK/
WHITE

HMLAUTHENTIC POLY HOODIE

- 100% polyester
- Knitted fabric with structure
- Waterbased printed logos
- String in hood in adult sizes

- Textured woven chevron tape
- 2114, 3062 & 7045 available in 3XL
- Regular fit

204931 : 116 128 140 152 164 176
204930 : S M L XL 2XL 3XL

DKK 249,95
DKK 299,95



1525 ASPHALT 2006 GREY MELANGE 2114 BLACK/WHITE
3062 TRUE RED 7045 TRUE BLUE 8745 CELESTIAL



HMLAUTHENTIC POLY HOODIE WOMAN

- 100% polyester
- Knitted fabric with structure
- Waterbased printed logos
- String in hood
- Textured woven chevron tape
- 2114, 3062 & 7045 available in 2XL
- Regular fit

204932 : XS S M L XL 2XL

DKK 299,95



1525 ASPHALT 2006 GREY MELANGE 2114 BLACK/WHITE
3062 TRUE RED 7045 TRUE BLUE 8745 CELESTIAL



HMLAUTHENTIC POLY ZIP HOODIE

- 100% polyester
- Knitted fabric with structure
- Waterbased printed logos
- String in hood in adult sizes
- Textured woven chevron tape
- Regular fit

204938 : 116 128 140 152 164 176
204937 : S M L XL 2XL 3XL

DKK 299,95
DKK 349,95



1525 ASPHALT 2006 GREY MELANGE 2114 BLACK/WHITE
3062 TRUE RED 7045 TRUE BLUE 8745 CELESTIAL



HMLAUTHENTIC POLY ZIP HOODIE WOMAN

- 100% polyester
- Knitted fabric with structure
- Waterbased printed logo and chevrons
- String in hood
- Textured woven chevron tape
- Regular fit

204939 : XS S M L XL 2XL

DKK 349,95



1525 ASPHALT 2006 GREY MELANGE 2114 BLACK/WHITE
3062 TRUE RED 7045 TRUE BLUE 8745 CELESTIAL



HMLAUTHENTIC MICRO JACKET

- 100% polyester
- Main: Woven fabric / Lining: mesh and taffeta: mesh fabric
- Waterbased printed logos
- Zipper pockets

- String and string stopper at hem
- Textured woven chevron tape
- 2114, 3062 & 7045 available in 3XL
- Regular fit

205376 : 116 128 140 152 164 176
205375 : S M L XL 2XL 3XL

DKK 299,95
DKK 399,95



2114
BLACK/
WHITE

3062
TRUE RED

7045
TRUE BLUE

8745
CELESTIAL



HMLAUTHENTIC MICRO PANT

- 100% polyester
- Main: Woven fabric / Lining: mesh and taffeta: mesh fabric
- Waterbased printed logos
- Zipper pockets

- Zipper at bottom leg
- String in waistband
- Textured woven chevron tape
- Regular fit

205378 : 116 128 140 152 164 176
205377 : S M L XL 2XL 3XL

DKK 249,95
DKK 299,95



2114
BLACK/
WHITE



HMLAUTHENTIC TRAINING SWEAT

- 100% polyester
- Sweat fabric
- Waterbased printed logos
- Rib cuff

- Textured woven chevron tape
- 2114, 3062 & 7045 available in 3XL
- Regular fit

205374 : 116 128 140 152 164 176
205373 : S M L XL 2XL 3XL

DKK 249,95
DKK 299,95



2114
BLACK/
WHITE

3062
TRUE RED

5001
SPORTS YELLOW

7045
TRUE BLUE



HMLAUTHENTIC SWEAT PANT

- 70% cotton, 30% polyester
- Sweat fabric
- Waterbased printed logos
- Rib cuff

- String in waistband
- Textured woven chevron tape
- Regular fit

205386 : 116 128 140 152 164 176
205385 : S M L XL 2XL 3XL

DKK 249,95
DKK 299,95



2114
BLACK/
WHITE



HMLAUTHENTIC TRAINING TEE

- 60% cotton, 40% polyester
- Jersey fabric
- Waterbased printed logos
- Textured woven chevron tape
- 2114, 3062 & 7045 available in 3XL
- Regular fit

205380 : 116 128 140 152 164 176
205379 : S M L XL 2XL 3XL

DKK 179,95
DKK 199,95



HMLAUTHENTIC FUNCTIONAL POLO

- 100% polyester
- Jersey fabric with structure
- Waterbased printed logos
- Button placket CF
- Rib collar
- Textured woven chevron tape

- 2114, 3062 & 7045 available in 4XL
- Regular fit
- BeeCool

205382 : S M L XL 2XL 3XL

DKK 299,95



HMLAUTHENTIC WOMAN FUNCTIONAL POLO

- 100% polyester
- Jersey fabric with structure
- Waterbased printed logos
- Button placket CF
- Rib collar

- Textured woven chevron tape
- Regular fit
- BeeCool

205384 : XS S M L XL 2XL

DKK 299,95



HMLAUTHENTIC TRAINING SHORT

- 100% polyester
- Woven fabric with stretch
- Waterbased printed logos
- String inwaistband

- Pockets
- Textured woven chevron tape
- Regular fit

205389 : 116 128 140 152 164 176
205388 : S M L XL 2XL

DKK 199,95
DKK 249,95



HMLAUTHENTIC WIND BREAKER

- 100% polyester
- Woven fabric
- Waterbased printed logos
- water repellent surface

- Textured woven chevron tape
- String and string stopper at hem
- Regular fit

205361 : 116 128 140 152 164 176
205360 : S M L XL 2XL

DKK 249,95
DKK 299,95



2114
BLACK/
WHITE

8745
CELESTIAL



HMLAUTHENTIC TRAINING JACKET

- Main: 100% polyester / Lining: 100% polyester
- Main: Woven fabric / Lining: mesh and taffeta: mesh fabric
- Waterbased printed logos
- Zipper pocket at back
- Elastic binding at cuff and hem

- String and string stopper at hem
- WP3000
- Textured woven chevron tape
- Regular fit
- Fluorine free water repellent

204936 : 116 128 140 152 164 176
204935 : S M L XL 2XL 3XL

DKK 399,95
DKK 449,95



1525
ASPHALT

2114
BLACK/
WHITE

3062
TRUE RED

7026
MARINE

7045
TRUE BLUE



HMLAUTHENTIC ALL-WEATHER JACKET

- Main: 100% polyester / Lining: 100% polyester
- Main: Woven fabric / Lining: taffeta
- Waterbased printed logos
- Zipper pockets
- String and string stopper at hem
- String and stopper in hood in adult sizes

- Stormcuff with thumbhole
- WP3000
- 2114, 3062 and 7045 available in 3XL
- Textured woven chevron tape
- Regular fit
- Fluorine free water repellent

205365 : 116 128 140 152 164 176
205364 : S M L XL 2XL 3XL

DKK 499,95
DKK 549,95



2114
BLACK/
WHITE

3062
TRUE RED

7026
MARINE

7045
TRUE BLUE

8745
CELESTIAL



HMLAUTHENTIC BENCH JACKET

- Main: 100% polyester / Lining: 100% polyester / Padding: 100% polyester
- Main: Woven fabric / Lining: taffeta / Padding: 100% polyester
- Waterbased printed logos
- Zipper pockets
- Inside chest zipper pocket

- String and string stopper in hood in adult sizes
- WP3000
- Textured woven chevron tape
- 2114 available in 3XL
- Regular fit
- Fluorine free water repellent

205363 : 116 128 140 152 164 176
205362 : S M L XL 2XL 3XL

DKK 699,95
DKK 799,95



2114
BLACK/
WHITE

8745
CELESTIAL





hmlAuthentic Poly Jersey S/S **204919**
& hmlAuthentic Poly Shorts **204924**



hmlAuthentic Poly Jersey S/S **204919**



hmlAuthentic Poly Jersey S/S **204919**



SHARE
THE
GAME



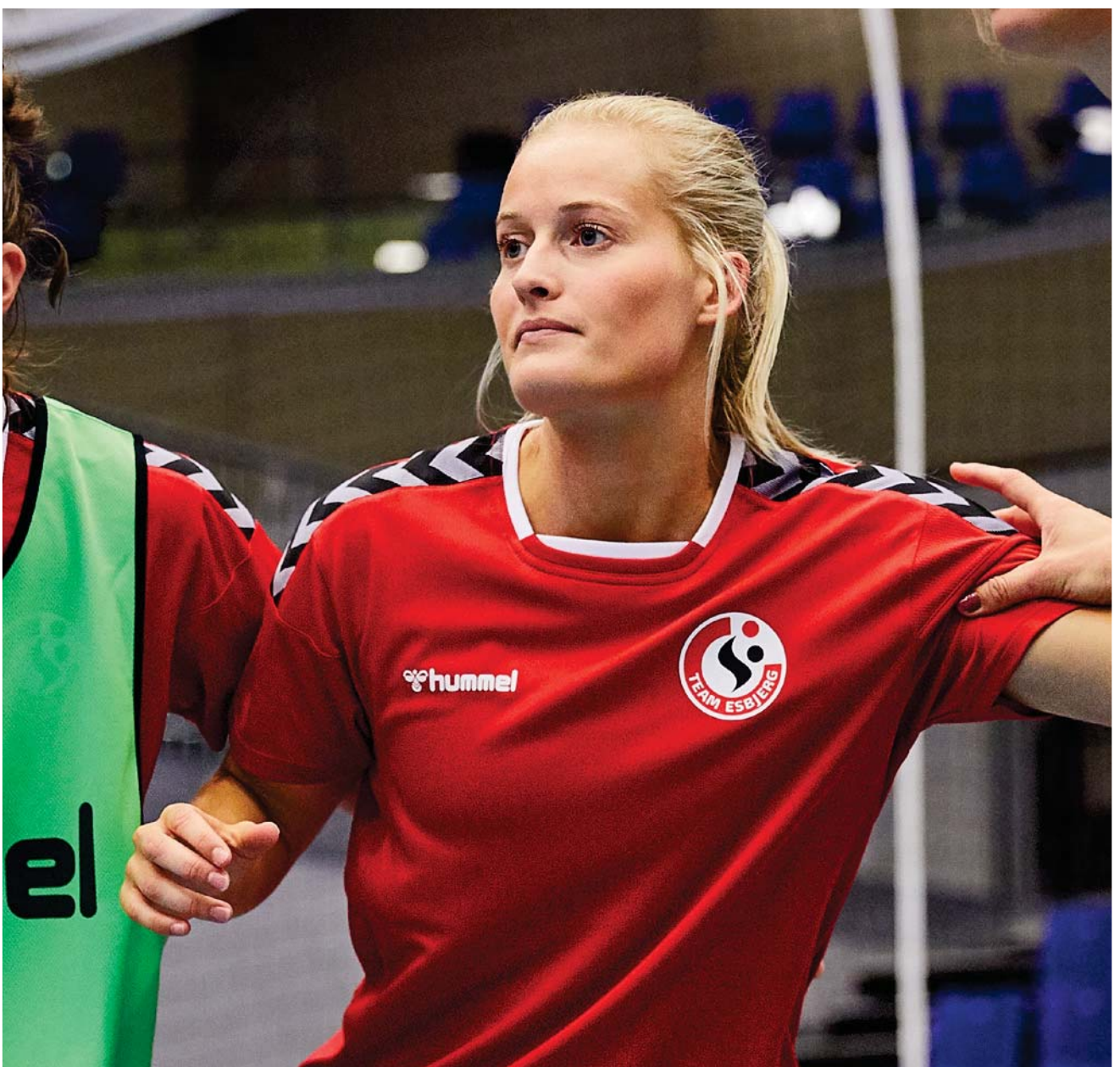
hmlAuthentic Half Zip Sweatshirt **204927**
& hmlAuthentic Training Pant **204933**



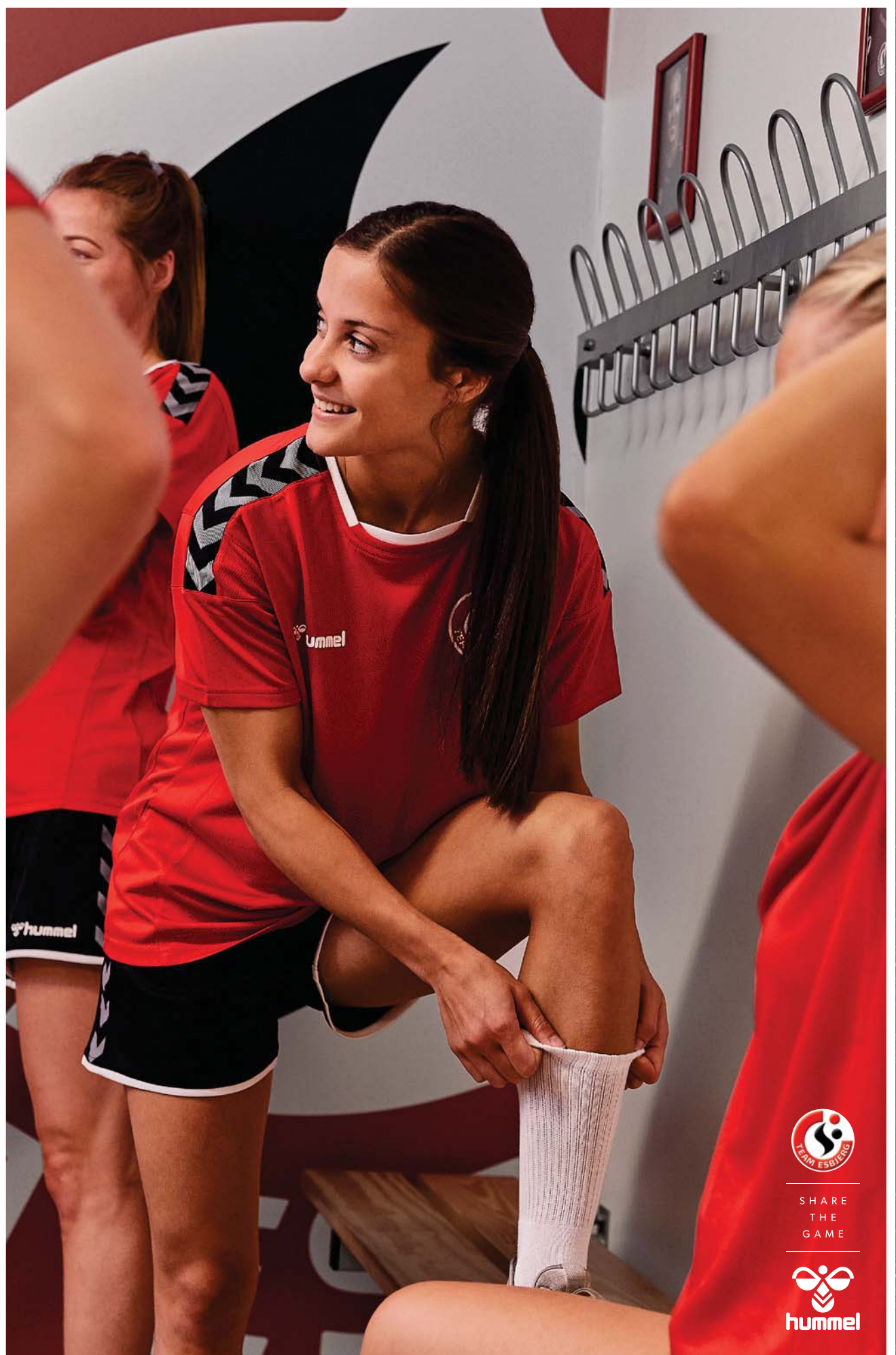
hmlAuthentic Poly Jersey Woman S/S **204921**



hmlAuthentic Poly Jersey Woman S/S **204921**



hmlAuthentic Poly Jersey Woman S/S **204921**



SHARE
THE
GAME



hmlAuthentic Poly Jersey Woman S/S **204921**
& hmlAuthentic Poly Shorts Woman **204926**

CORE



COLLECTION RUNNING FROM 2016-2021

- **Quality basics satisfying every need**
- **Comfortable fabrics and functional cuts for performance**
- **Iconic chevron print for a consistent look**
- **Elevated neck cuts and sleeve hem details**

Offering a strong range of quality basics, the popular Core collection covers everything players need for both training and matches. As the collection includes everything from comfortable and durable jerseys to

pants, jackets and sweatshirts, the Core collection is one of hummel's classics. Elevated neck cuts, sleeve hem details, and the iconic chevrons create a look that delivers maximum value for money.

SHORTS & T-SHIRT FUNCTIONALITIES



Modern neck construction
in contrast colour

Light weight
material with
high wickability



Sleeve hem detail

Printed chevrons



SANDRA STARKE
S C F R E I B U R G

CORE OVERVIEW

CORE SS POLY JERSEY
003636/ 103636



CORE WOMENS SS JERSEY
003649



CORE LS POLY JERSEY
004615/ 104615



CORE STRIPED SS JERSEY
003755/ 103755



CORE TEAM JERSEY SS
203436/203437



CORE TEAM JERSEY WOMAN SS
203438



CORE BASKET JERSEY
003651/103651



CORE BASKET SHORTS
011087/111087



CORE POLY SHORTS
011083/ 111083



CORE WOMENS SHORTS
011086



CORE POLY COACH SHORTS
203526/203527



CORE HIPSTER WOMAN
203525/204051



CORE FUNCTIONAL POLO
203447



CORE FUNCTIONAL POLO WOMAN
203448



CORE POLYESTER TEE
003756/ 103756



CORE POLYESTER TEE WOMAN
203435



CORE 1/2 ZIP SWEAT
036895/136895



CORE 1/2 ZIP SWEAT WOMAN
203439



CORE POLY JACKET
036893/136893



CORE MICRO ZIP JACKET
203441/203442



CORE FOOTBALL PANT
032165/132165



CORE TRAINING POLY PANT
203445



CORE POLY PANT
032173/132173



CORE MICRO PANT
203443/203444



CORE SPRAY JACKET
080822/180822



CORE BENCH JACKET
204170/204171



CORE INDOOR GK COTTON PANT
203446/204172



CORE TIGHTS WOMAN
204300/204301



CORE ALLWEATHER PANT
032181



CORE BENCH PANTS
032182



CORE TEAM JERSEY S/S

- 100% polyester
- Jersey fabric
- Waterbased logo and chevrons
- Regular fit
- BeeCool

203437 : 116 128 140 152 164 176
203436 : S M L XL 2XL 3XL

DKK 129,95
DKK 149,95



2001 BLACK 3062 TRUE RED 5001 SPORTS YELLOW 5006 TANGERINE 6140 EVERGREEN 7045 TRUE BLUE 9001 WHITE



CORE SS POLY JERSEY

- 100% polyester
- Printed chevrons and logo
- Regular fit

103636 : 116-128 140-152 164-176
003636 : S M L XL 2XL 3XL

DKK 129,95
DKK 149,95



2005 BLACK PR 3056 MAROON PR 3060 TRUE RED PRO 4340 ROSE VIOLET/MARINE PR 5007 SPORTS YELLOW PR 5010 TANGERINE PR 5167 SPORTS YELLOW/TRUE BLUE 6141 EVERGREEN PR
7037 ARGENTINA BLUE PR 7043 TRUE BLUE PRO 8619 ATLANTIS/MARINE PR 9006 WHITE PR 9368 WHITE/TRUE BLUE



CORE LS POLY JERSEY

- 100% polyester
- Printed chevrons & logo
- Regular fit

104615 : 116-128 140-152 164-176
004615 : S M L XL 2XL 3XL

DKK 169,95
DKK 199,95



2005 BLACK PR 3061 TRUE RED PR 5007 SPORTS YELLOW PR 5010 TANGERINE PR 5167 SPORTS YELLOW/TRUE BLUE 6141 EVERGREEN PR 7037 ARGENTINA BLUE PR 7044 TRUE BLUE PR
9006 WHITE PR 9368 WHITE/TRUE BLUE



CORE TEAM JERSEY WOMAN S/S

- 100% polyester
- Jersey fabric
- Waterbased logo and chevrons
- Regular fit
- BeeCool

203438 : XS S M L XL 2XL

DKK 149,95



CORE WOMENS SS JERSEY

- 100% polyester
- Printed chevrons & logo
- Regular fit

003649 : XS S M L XL 2XL

DKK 149,95



CORE STRIPED SS JERSEY

- 100% polyester
- Sublimation printed stripes at body
- Printed chevrons & logo
- Regular fit

103755 : 116-128 140-152 164-176
003755 : S M L XL 2XL

DKK 199,95
DKK 249,95



CORE POLYESTER TEE

- 100% polyester
- Printed chevrons & logo
- Regular fit

103756 : 104 116-128 140-152 164-176
003756 : S M L XL 2XL 3XL

DKK 99,95
DKK 129,95



1525 ASPHALT 2001 BLACK 3062 TRUE RED 6140 EVERGREEN 7026 MARINE 7045 TRUE BLUE



CORE POLY TEE WOMAN S/S

- 100% polyester
- Jersey fabric
- Waterbased logo and chevrons
- Regular fit
- BeeCool

203435 : XS S M L XL 2XL

DKK 129,95



1525 ASPHALT 2001 BLACK 3062 TRUE RED 6140 EVERGREEN 7026 MARINE 7045 TRUE BLUE



CORE BASKET JERSEY

- 100% polyester knit
- Printed chevrons & logo
- Regular fit

103651 : 116-128 140-152 164-176
003651 : S M L XL 2XL 3XL

DKK 129,95
DKK 149,95



2001 BLACK 3062 TRUE RED 5001 SPORTS YELLOW 6140 EVERGREEN 7045 TRUE BLUE 9001 WHITE



CORE POLY SHORTS

- 100% polyester
- Printed chevrons & logo
- Inner briefs only in color 9006
- Regular fit

111083 : 116-128 140-152 164-176
011083 : S M L XL 2XL 3XL

DKK 129,95
DKK 129,95



CORE WOMENS SHORTS

- 100% polyester
- Printed chevrons & logo
- Inner briefs only in color 9006
- Regular fit

011086 : XS S M L XL 2XL

DKK 129,95



CORE BASKET SHORTS

- 100% polyester knit
- Printed chevrons & logo
- Inner briefs only in color 9001
- Regular fit

111087 : 116-128 140-152 164-176
011087 : S M L XL 2XL 3XL

DKK 99,95
DKK 129,95



CORE FUNCTIONAL POLO

- Main: 100% polyester / Rib: polyester, elastane
- Main: Piqué fabric / Rib: flat knit rib
- Placket with buttons CF
- Waterbased printed logo and chevrons
- Regular fit



203447 : S M L XL 2XL 3XL

DKK 199,95



CORE FUNCTIONAL POLO WOMAN

- Main: 100% polyester / Rib: polyester, elastane
- Main: Piqué fabric / Rib: flat knit rib
- Placket with buttons CF
- Waterbased printed logo and chevrons
- Regular fit



203448 : XS S M L XL 2XL

DKK 199,95



CORE POLY COACH SHORTS

- 100% polyester
- Interlock fabric
- Zippered pockets
- Waterbased printed logo
- Regular fit



203527 : 116 128 140 152 164 176
203526 : S M L XL 2XL 3XL

DKK 169,95
DKK 199,95



2001
BLACK

CORE HIPSTER WOMAN

- 92% polyester, 8% elastane
- Jersey fabric
- Waterbased printed logo and chevrons
- Tight fit

204051 : 116 128 140 152 164
203525 : XS S M L XL 2XL

DKK 129,95
DKK 149,95



2001
BLACK

3062
TRUE RED

7045
TRUE BLUE



CORE TIGHTS WOMAN

- 92% polyester, 8% elastane
- Jersey fabric
- Waterbased printed logo and chevrons
- Tight fit

204301 : 116 128 140 152 164
204300 : XS S M L XL 2XL

DKK 199,95
DKK 249,95



2001
BLACK



CORE INDOOR GK COTTON PANT

- 70% cotton, 30% polyester
- Sweat fabric
- Waterbased printed logo and chevrons
- Regular fit

204172 : 116 128 140 152 164 176
203446 : S M L XL 2XL 3XL

DKK 199,95
DKK 249,95



2001
BLACK



CORE POLY JACKET

- 100% polyester
- Zippered pockets
- Elastic inside waistband and cuff
- Printed chevrons & logo
- Regular fit

136893 : 116 128 140 152 164 176
036893 : S M L XL 2XL 3XL

DKK 249,95
DKK 299,95



CORE 1/2 ZIP SWEAT

- 100% polyester
- Elastic inside waistband and cuff
- Printed chevrons & logo
- Regular fit

136895 : 116-128 140-152 164-176
036895 : S M L XL 2XL 3XL

DKK 249,95
DKK 299,95



CORE POLY HALF ZIP SWEATSHIRT WOMAN

- 100% polyester
- Interlock fabric
- Elasticated hem at bottom and cuff
- Waterbased printed logo and chevrons
- Regular fit

203439 : XS S M L XL 2XL

DKK 299,95



CORE MICRO ZIP JACKET

- Main: 100% polyester / Lining: 100% polyester
- Main: Woven fabric / Lining: Woven fabric and mesh
- Elasticated cuff hem
- Drawstring with string stopper at bottom
- Zipper pockets
- Waterbased printed logo and chevrons
- Regular fit

203442 : 116 128 140 152 164 176
203441 : S M L XL 2XL 3XL

DKK 249,95
DKK 299,95



CORE POLY PANT

- 100% polyester knit
- Zippered pockets
- Zippered leg vents
- Printed chevrons & logo
- Regular fit

132173 : 116 128 140 152 164 176
032173 : S M L XL 2XL 3XL

DKK 199,95
DKK 249,95



2001
BLACK



CORE FOOTBALL PANT

- 100% polyester
- 220gm2 100% polyester knit
- 100% polyester rib at backside of lower legs
- Printed chevrons and logo
- Regular fit

132165 : 116 128 140 152 164 176
032165 : S M L XL 2XL 3XL

DKK 199,95
DKK 249,95



2001
BLACK



7026
MARINE



CORE TRAINING POLY PANT

- 100% polyester
- Interlock fabric
- Pockets
- Waterbased printed logo and chevrons
- Regular fit

203445 : S M L XL 2XL 3XL

DKK 249,95



2001
BLACK



CORE MICRO PANT

- Main: 100% polyester / Lining: 100% polyester
- Main: Woven fabric / Lining: Woven fabric and mesh
- Zipper at pockets and leg placket
- Waterbased printed logo and chevrons
- Regular fit

203444 : 116 128 140 152 164 176
203443 : S M L XL 2XL 3XL

DKK 199,95
DKK 249,95



2001
BLACK



CORE SPRAY JACKET

- 100% woven polyester (190T), 2000M W/P
- Zippered pocket at back of right side seam
- Elastic inside cuff and waistband
- Printed chevrons & logo
- Regular fit

180822 : 116-128 140-152 164-176
080822 : S M L XL 2XL 3XL

DKK 299,95
DKK 349,95



CORE BENCH JACKET

- 100% polyester
- Woven fabric
- Quilted padding
- Storm cuff
- Zip pockets
- Waterbased printed logo and chevrons
- Regular fit

204171 : 116 128 140 152 164 176
204170 : S M L XL 2XL 3XL

DKK 399,95
DKK 499,95



CORE ALL-WEATHER PANT

- 100% woven polyester (190T) 2000M W/P
- Zippered side pockets
- Printed logo
- Regular fit

032181 : S M L XL 2XL

DKK 399,95



CORE BENCH PANTS

- 100% Polyester with compact padding
- Zippered side pockets
- Printed logo
- Regular fit

032182 : XS S M L XL 2XL 3XL

DKK 599,95





SHARE
THE
GAME



Core Team Jersey Woman S/S **203438**



Core Womens S/S Jersey **003649**
& Core Womens Shorts **011086**



Core Womens S/S Jersey **003649**
& Core Womens Shorts **011086**



Core Womens S/S Jersey **003649**



SHARE
THE
GAME





Core S/S Jersey **003636**



Core S/S Jersey **003636**
Core Poly Shorts **011083**



Core S/S Jersey **003636**
Core Poly Shorts **011083**



SHARE
THE
GAME



Core S/S Jersey **003636**
Core Poly Shorts **011083**

SHARE THE GAME SHARE THE GAME SHARE THE GAME SHARE THE GAME SHARE THE GAME SHARE THE GAME SHARE THE GAME SHARE THE GAME SHARE THE GAME

SHARE THE GAME SHARE THE GAME SHARE THE GAME SHARE THE GAME SHARE THE GAME SHARE THE GAME SHARE THE GAME SHARE THE GAME SHARE THE GAME



Pared

GARCIA

CLUB ATLÉTICO OSASUNA

BEE SPOKE



DESIGN YOUR OWN KIT WITH BEE SPOKE

With the hummel BeeSpoke programme, clubs can have unique kits and create their own vision of style. Clubs can choose from five jersey styles with either short or long sleeves, and a variety of special colours. With more than 4000 possible design variations and flexibility on quantity and lead time,

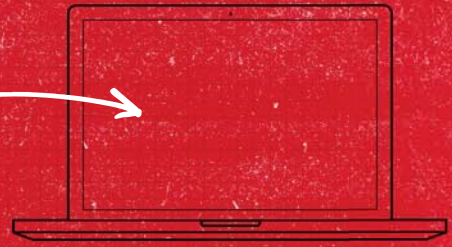
hummel BeeSpoke highlights the individuality of every single club and caters to speciality needs and requirements.

It's time to go explore the extensive possibilities of the hummel BeeSpoke universe

BEE SPOKE

Contact your local hummel distributor

Login to the beespoke website and click on the "create new design" button or click on one of the inspirational jerseys already created



Short sleeves



Long sleeves



Shorts



Colors



Stripes



All styles are available in mens, womens and kids sizes

EXAMPLE



9001 White



3062 True Red



Hansen

This kit is designed with BeeSpoke

HENRIK MØLLGAARD

AALBORG HÅNDBOLD

GOALKEEPER & REFEREE



- BREATHABLE FABRICS AND MOISTURE MANAGEMENT
- PADDED ELBOWS AND THIGHS FOR PROTECTIVE SUPPORT
- FUNCTIONAL FITS AND RANGE OF MOVEMENT FOR PERFORMANCE
- ICONIC DESIGN REFERENCES AND SEASONAL COLOURS

The goalkeeper and referee collection delivers extra support for every move. Protective padding, effective moisture management and breathable mesh inserts allow for unrestricted movement, extreme leaps and jumps. Padded elbows and thighs ensure optimal protection and both the design

and colours allow referees and goalkeepers to be easily recognized on the field or court. Inspired by Peter Schmeichel's iconic 90s goalkeeper jersey, selected styles are decked out with retro embossed print.

ESSENTIAL GK JERSEY

- 100% polyester
- Moisture management
- Padded elbow protection
- Rib collar and cuffs
- Embossed print pattern on front chest and back
- Printed chevrons and logo

104087 : 116-128 140-152 164-176
004087 : S M L XL 2XL

DKK 349,95
DKK 399,95



3055
MAROON

5006
TANGERINE

6102
EVENING PRIMROSE

7905
SCUBA BLUE



ESSENTIAL GK SHORTS

- 100% polyester
- Moisture management
- Printed chevrons and logo

110815 : 116-128 140-152 164-176
010815 : S M L XL 2XL

DKK 199,95
DKK 249,95



2001
BLACK



ESSENTIAL GK SHORTS W PADDING

- 100% polyester
- Moisture management
- Padded thigh protection
- Printed chevrons and logo

110816 : 116-128 140-152 164-176
010816 : S M L XL 2XL

DKK 249,95
DKK 299,95



2001
BLACK



CLASSIC GK PANT

- 70% polyester/30% cotton
- Cool Zone = finish insures effective moisture management, quick dry and high comfort
- Fit Zone = created to support natural active motion
- Guard Zone = padding on each side

- Elastic waistband wit drawstring
- Padding on each side
- Printed logo

131198 : 116/128 140/152 164/176
031198 : M L XL 2XL

DKK 299,95
DKK 299,95



2001
BLACK



CORE GK SET

- 100% polyester
- Jersey fabric
- Waterbased printed logo and chevrons
- Silicone print at sleeves

205281 : 116 128 140 152 164 176
205280 : S M L XL 2XL 3XL

DKK 249,95
DKK 299,95



5006
TANGERINE



6102
EVENING PRIMROSE



6140
EVERGREEN



7905
SCUBA BLUE



HMLREFEREE JERSEY S/S

- 100% polyester
- Jersey fabric
- Waterbased printed logo and stripes
- Velcro closing at top of pockets
- Regular fit

204960 : XS S M L XL 2XL 3XL

DKK 299,95



2001
BLACK



3648
DIVA PINK



6102
EVENING PRIMROSE



7905
SCUBA BLUE



HMLREFEREE POLY SHORTS

- 100% polyester
- Jersey fabric
- Waterbased printed logo
- Velcro closing at top of back pocket
- 2 front pockets
- Regular fit

204961 : XS S M L XL 2XL 3XL

DKK 299,95



2001
BLACK





Essential gk jersey **004087**
Essential GK shorts **010815**



SHARE
THE
GAME

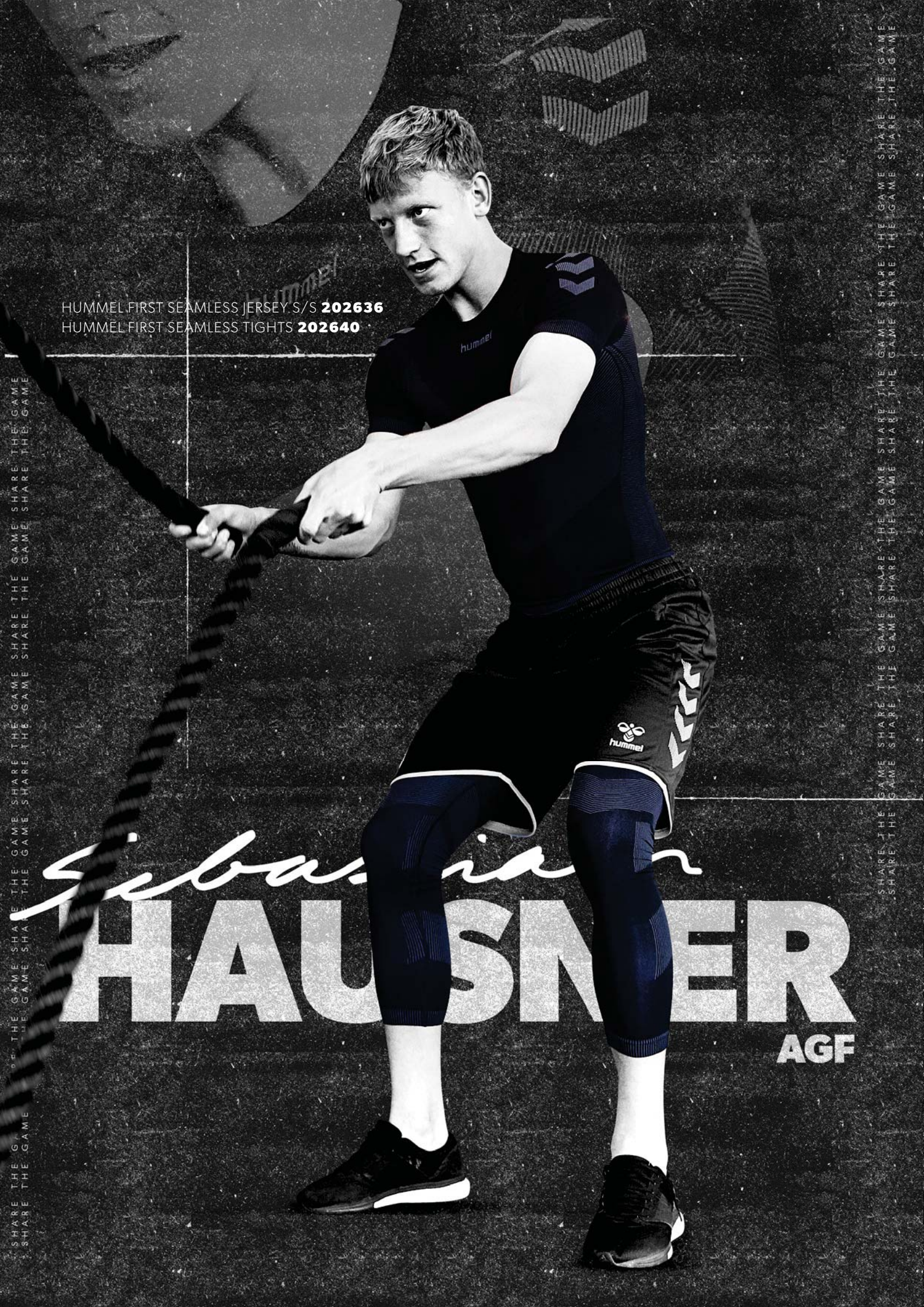


HUMMEL FIRST SEAMLESS JERSEY S/S **202636**
HUMMEL FIRST SEAMLESS TIGHTS **202640**

SHARE THE GAME SHARE THE GAME SHARE THE GAME SHARE THE GAME SHARE THE GAME
SHARE THE GAME SHARE THE GAME SHARE THE GAME SHARE THE GAME SHARE THE GAME

SHARE THE GAME SHARE THE GAME SHARE THE GAME SHARE THE GAME SHARE THE GAME
SHARE THE GAME SHARE THE GAME SHARE THE GAME SHARE THE GAME SHARE THE GAME

Sebastian
HAUSNER
AGF



BASELAYER



- **BODY-ADAPTED VENTILATION ZONES AND MOISTURE MANAGEMENT**
- **LIGHTWEIGHT MATERIALS IN QUICK-DRYING FABRICS**
- **ERGONOMIC PANELLING, COMPRESSION FABRICS AND SEAMLESS DESIGNS**
- **ANTI-BACTERIAL TREATMENTS AND HIGH-PERFORMANCE COMFORT**

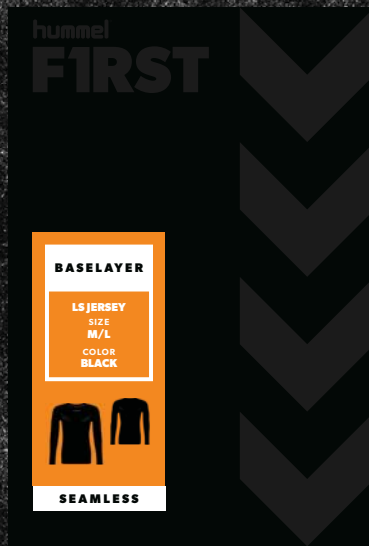
Providing the utmost in technical performance and training wear, the premium Baselayer collection offer high-performance with a focus on materials, comfort and functionality. The Baselayer collection presents three different sub-collections

to meet every need of the athlete. Lightweight materials with ventilation zones regulate body temperatures while ergonomic panelling supports muscle movement.

hummel

FIRST

BASELAYER



COMPRESSION

Fast recovery and full muscle support for team players and athletes

- **HIGH COMPRESSION MUSCLE SUPPORT** provides endurance and fast recovery.
- **ERGONOMIC FIT** supports your muscle movements and boosts performance.
- **HIGH-STRETCH CAPABILITIES** provides ease of movement.

SEAMLESS

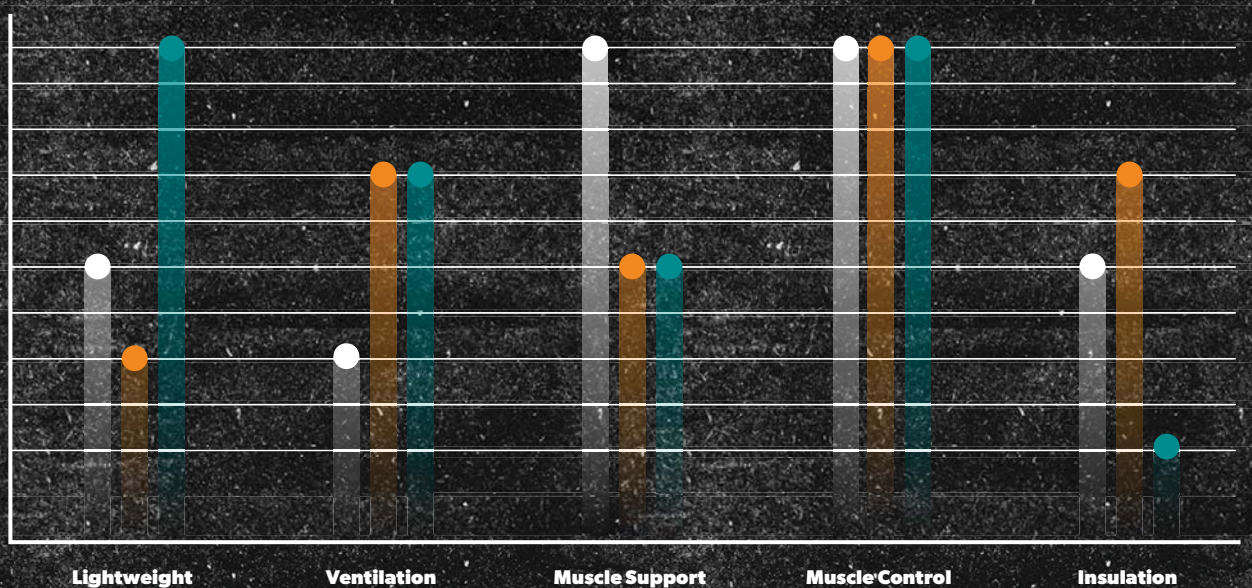
For professional team players and athletes who need extra insulation and ventilation

- **SEAMLESS CONSTRUCTION** ensures maximum comfort.
- **INSULATION** will keep you warm and comfy.
- **VENTILATION ZONES** will cool your body when overheated.
- **MUSCLE-ENHANCING CONSTRUCTION** provides freedom of movement.

PERFORMANCE

Cooling performance for team players and athletes

- **BODY-ADAPTED VENTILATION ZONES** will cool your body when overheated.
- **LIGHTWEIGHT FABRIC** provides comfort and ease of wear.
- **ERGONOMIC PANELING** supports your muscle movements.
- **TIGHT PERFORMANCE FIT** provides full motion control.



HUMMEL FIRST COMPRESSION SS M

- 80% Nylon / 20% Spandex
- High compression material for maximum endurance and fast recovery
- Heat transfer chevrons icon logo
- Heat transfer hummel first logo
- Sublimated chevrons and hummel logo in neckline
- Mesh ventilation panels

003746 : S M L XL 2XL

DKK 499,95



2001
BLACK



HUMMEL FIRST COMPRESSION LS M

- 80% Nylon / 20% Spandex
- High compression material for maximum endurance and fast recovery
- Heat transfer chevrons icon logo
- Heat transfer hummel first logo
- Sublimated chevrons and hummel logo in neckline
- Mesh ventilation panels

004329 : S M L XL 2XL

DKK 599,95



2001
BLACK



HUMMEL FIRST COMPRE M S TIGHTS

- 80% Nylon / 20% Spandex
- High compression material for maximum endurance and fast recovery
- Heat transfer chevrons icon logo
- Heat transfer hummel first logo
- Sublimated chevrons and hummel logo in waistline
- Mesh ventilation panels

011361 : S M L XL 2XL

DKK 399,95



2001
BLACK



HUMMEL FIRST COMPRE L M TIGHTS

- 80% Nylon / 20% Spandex
- High compression material for maximum endurance and fast recovery
- Heat transfer chevrons icon logo
- Heat transfer hummel first logo
- Sublimated chevrons and hummel logo in waistline
- Mesh ventilation panels

011362 : S M L XL 2XL

DKK 599,95



2001
BLACK



HUMMEL FIRST SEAMLESS JERSEY S/S

- 92% nylon, 8% elastane
- Stretchable fabric
- Knitted logo and chevrons
- Tight fit
- Seamless

202637 : 116-128 140-152
202636 : XS-S M-L XL-2XL

DKK 199,95
DKK 219,95



2001
BLACK

HUMMEL FIRST SEAMLESS JERSEY L/S

- 92% nylon, 8% elastane
- Stretchable fabric
- Knitted logo and chevrons
- Tight fit
- Seamless

202639 : 116-128 140-152
202638 : XS-S M-L XL-2XL

DKK 219,95
DKK 249,95



2001
BLACK

HUMMEL FIRST SEAMLESS SHORT TIGHTS

- 90% nylon, 10% elastane
- Stretchable fabric
- Knitted logo and chevrons
- Tight fit
- Seamless

202643 : 116-128 140-152
202642 : XS-S M-L XL-2XL

DKK 129,95
DKK 149,95



2001
BLACK

HUMMEL FIRST SEAMLESS TIGHTS

- 90% nylon, 10% elastane
- Stretchable fabric
- Knitted logo and chevrons
- Tight fit
- Seamless

202641 : 116-128 140-152
202640 : XS-S M-L XL-2XL

DKK 199,95
DKK 219,95



2001
BLACK

HUMMEL FIRST SEAMLESS JERSEY S/S WOMAN

- 92% nylon, 8% elastane
- Stretchable fabric
- Knitted logo and chevrons
- Tight fit
- Seamless

202644 : XS-S M-L XL-2XL

DKK 219,95



2001
BLACK



HUMMEL FIRST SEAMLESS JERSEY L/S WOMAN

- 90% nylon, 10% elastane
- Stretchable fabric
- Knitted logo and chevrons
- Tight fit
- Seamless

202645 : XS-S M-L XL-2XL

DKK 249,95



2001
BLACK



HUMMEL FIRST SEAMLESS SHORT TIGHTS WOMEN

- 90% nylon, 10% elastane
- Stretchable fabric
- Knitted logo and chevrons
- Tight fit
- Seamless

202649 : XS-S M-L XL-2XL

DKK 149,95



2001
BLACK



HUMMEL FIRST SEAMLESS TIGHTS WOMEN

- 92% nylon, 8% elastane
- Stretchable fabric
- Knitted logo and chevrons
- Tight fit
- Seamless

202648 : XS-S M-L XL-2XL

DKK 219,95



2001
BLACK



HUMMEL FIRST SEAMLESS TANK TOP WOMAN

- 92% nylon, 8% elastane
- Stretchable fabric
- Knitted logo and chevrons
- Tight fit
- Seamless

202650 : XS-S M-L XL-2XL

DKK 199,95



2001
BLACK



HUMMEL FIRST SEAMLESS BRA WOMEN

- 94% nylon, 6% elastane
- Stretchable fabric
- Padded breastcups
- Knitted logo and chevrons
- Tight fit
- Seamless

202647 : XS-S M-L XL-2XL

DKK 199,95



2001
BLACK



HML FIRST PERFORMANCE JERSEY S/S

- 88% polyester 12% elastane
- Jersey fabric
- Waterbased printed logo and chevrons
- Mesh insert at neck and armhole
- Tight fit

204501 : 140 152 164
204500 : S M L XL 2XL

DKK 169,95
DKK 199,95



HML FIRST PERFORMANCE JERSEY L/S

- 88% polyester 12% elastane
- Jersey fabric
- Waterbased printed logo and chevrons
- Mesh insert at neck and armhole
- Tight fit

204503 : 140 152 164
204502 : S M L XL 2XL

DKK 219,95
DKK 249,95



HML FIRST PERFORMANCE TIGHT SHORTS

- 88% polyester 12% elastane
- Jersey fabric
- Waterbased printed logo and chevrons
- Mesh insert at waistband and crotch
- Tight fit

204505 : 140 152 164
204504 : S M L XL 2XL

DKK 129,95
DKK 149,95



HML FIRST PERFORMANCE TIGHTS

- 88% polyester 12% elastane
- Jersey fabric
- Waterbased printed logo and chevrons
- Mesh insert at waistband and crotch
- Tight fit

204547 : 140 152 164
204513 : S M L XL 2XL

DKK 219,95
DKK 249,95



HML FIRST PERFORMANCE WOMEN JERSEY S/S

- 88% polyester 12% elastane
- Jersey fabric
- Waterbased printed logo and chevrons
- Mesh insert at neck and armhole
- Tight fit

204514 : XS S M L XL

DKK 199,95



2001
BLACK



9001
WHITE



HML FIRST PERFORMANCE WOMEN JERSEY L/S

- 88% polyester 12% elastane
- Jersey fabric
- Waterbased printed logo and chevrons
- Mesh insert at neck and armhole
- Tight fit

204515 : XS S M L XL

DKK 249,95



2001
BLACK



9001
WHITE



HML FIRST PERFORMANCE WOMAN HIPSTER

- 88% polyester 12% elastane
- Jersey fabric
- Waterbased printed logo and chevrons
- Mesh insert at waistband and crotch
- Tight fit

204516 : XS S M L XL 2XL

DKK 149,95



2001
BLACK



HML FIRST PERFORMANCE WOMEN TIGHTS

- 88% polyester 12% elastane
- Jersey fabric
- Waterbased printed logo and chevrons
- Mesh insert at waistband and crotch
- Tight fit

204517 : XS S M L XL

DKK 249,95



2001
BLACK

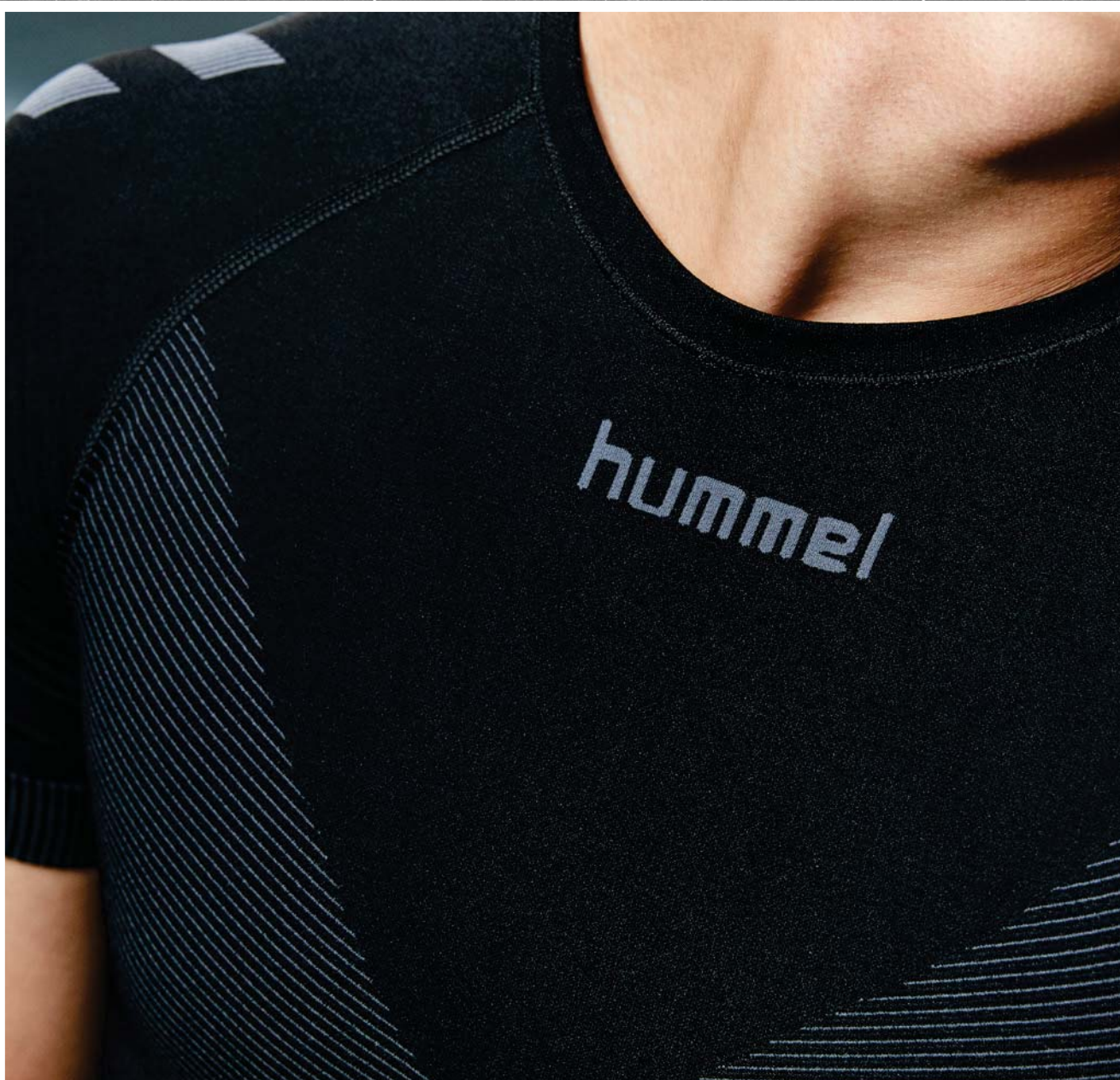




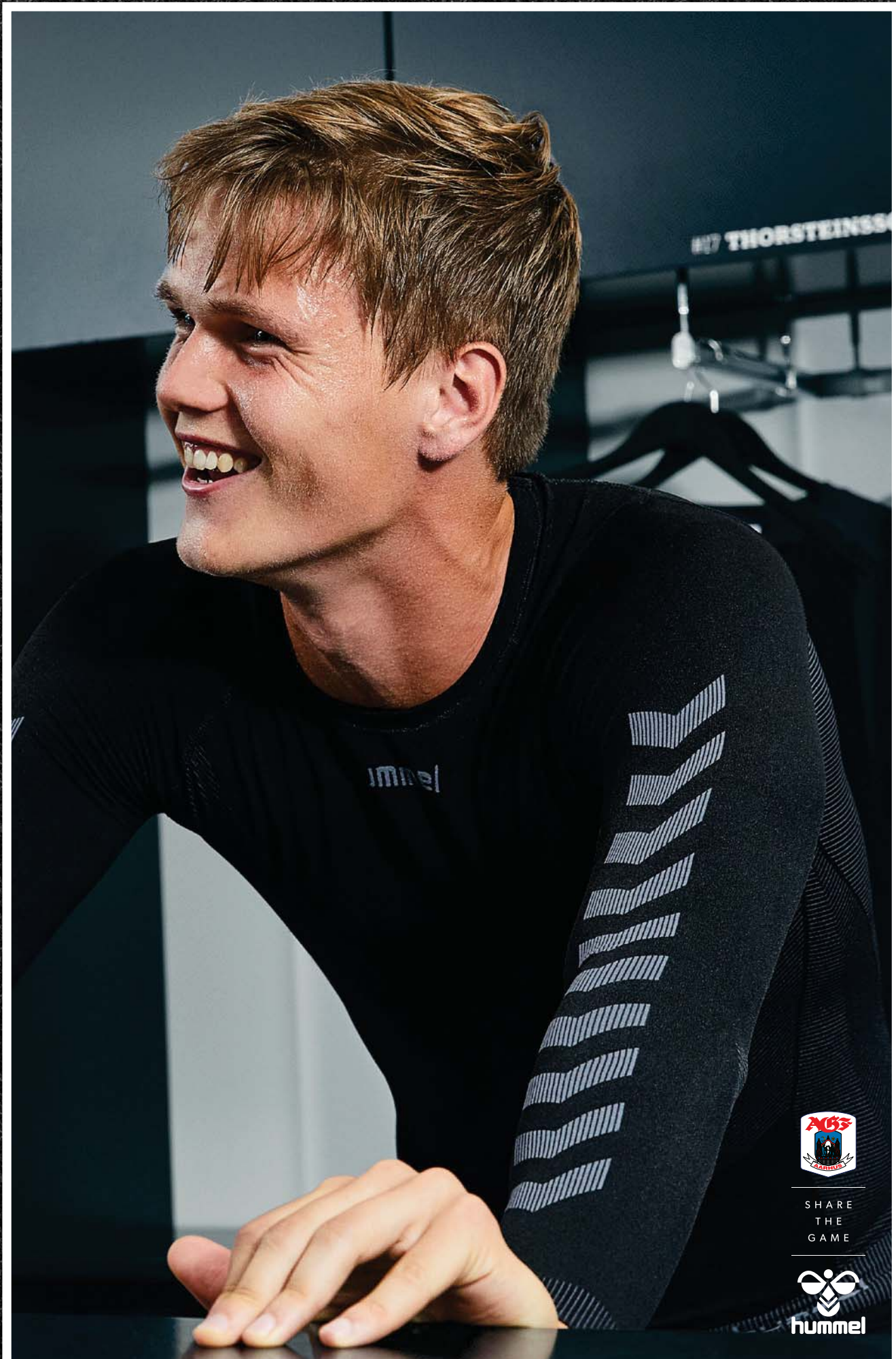
hummel First Seamless Jersey S/S **202636**
& hummel First Seamless Short Tights **202642**



hummel First Seamless Jersey S/S **202636**
& hummel First Seamless Tights **202640**



hummel First Seamless Jersey S/S **202636**



SHARE
THE
GAME



hummel



HMLMOVE POLO 206935

HMLMOVE CLASSIC PANTS 206927



SHARE THE GAME SHARE THE GAME SHARE THE GAME SHARE THE GAME SHARE THE GAME
SHARE THE GAME SHARE THE GAME SHARE THE GAME SHARE THE GAME SHARE THE GAME

SHARE THE GAME SHARE THE GAME SHARE THE GAME SHARE THE GAME SHARE THE GAME
SHARE THE GAME SHARE THE GAME SHARE THE GAME SHARE THE GAME SHARE THE GAME

AT
RK VARDAR

LEISURE



- **COMFORTABLE BASICS IN TIMELESS DESIGNS**
 - **CASUAL YET STYLISH DESIGN**
 - **ACTIVWEAR FOR BOTH LIGHT WORKOUTS AND EVERYDAY USE**
 - **PERFECT FOR TRAVELLING TO AND FROM TRAINING**
- 86 HUMMEL GO**
 - 91 CIMA**
 - 94 MOVE**
 - 97 SPORT STYLE**
 - 102 NORTH**

hummel offers a range of comfortable styles that combines versatile sportswear and athleisure trends with functional apparel for the everyday wardrobe. The styles are crafted from comfortable fabrics with active fits making them ideal for performance and traveling – and perfect to wear to and from training

– for the individual athlete and for teams. Consisting of timeless designs with multi opportunity styles, the hummel leisure collections call for active consumers who value comfortable yet stylish clothes that are trend-driven but easy to wear.

HMLGO COTTON T-SHIRT S/S

- 100% cotton
- Jersey fabric
- Waterbased printed logo and chevrons
- Regular fit

203567 : 116 128 140 152 164 176
 203566 : S M L XL 2XL 3XL

DKK 99,95
 DKK 119,95



2001 BLACK 2006 GREY MELANGE 3062 TRUE RED 5001 SPORTS YELLOW 6140 EVERGREEN 7026 MARINE 7045 TRUE BLUE 9001 WHITE

HMLGO COTTON T-SHIRT WOMAN S/S

- 100% cotton
- Jersey fabric
- Waterbased printed logo and chevrons
- Regular fit

203440 : XS S M L XL 2XL

DKK 119,95



2001 BLACK 2006 GREY MELANGE 3062 TRUE RED 5001 SPORTS YELLOW 6140 EVERGREEN 7026 MARINE 7045 TRUE BLUE 9001 WHITE

HMLGO COTTON LOGO T-SHIRT S/S

- 100% cotton
- Jersey fabric
- Waterbased printed logo
- Regular fit

203514 : 116 128 140 152 164 176
 203513 : S M L XL 2XL 3XL

DKK 99,95
 DKK 119,95



2001 BLACK 2006 GREY MELANGE 3062 TRUE RED 5001 SPORTS YELLOW 6140 EVERGREEN 7026 MARINE 7045 TRUE BLUE 9001 WHITE

HMLGO COTTON LOGO T-SHIRT WOMAN S/S

- 100% cotton
- Jersey fabric
- Waterbased printed logo
- Regular fit

203518 : XS S M L XL 2XL

DKK 119,95



2001 BLACK 2006 GREY MELANGE 3062 TRUE RED 5001 SPORTS YELLOW 6140 EVERGREEN 7026 MARINE 7045 TRUE BLUE 9001 WHITE

HMLGO COTTON POLO

- Grey: 90% cotton 10% viscose - other colours: 100% cotton
- Main: Piqué fabric / Rib: flat knit rib
- Placket with buttons CF
- Waterbased printed logo and chevrons
- Regular fit

203521 : 116 128 140 152 164 176
203520 : S M L XL 2XL 3XL

DKK 179,95
DKK 199,95



2001 BLACK 2006 GREY MELANGE 3062 TRUE RED 6140 EVERGREEN 7045 TRUE BLUE 9001 WHITE



HMLGO COTTON POLO WOMAN

- 100% cotton
- Main: Piqué fabric / Rib: flat knit rib
- Placket with buttons CF
- Waterbased printed logo and chevrons
- Regular fit

203522 : XS S M L XL 2XL

DKK 199,95



2001 BLACK 2006 GREY MELANGE 3062 TRUE RED 6140 EVERGREEN 7045 TRUE BLUE 9001 WHITE



HMLGO COTTON BERMUDA SHORTS

- 80% cotton, 20% polyester
- Sweat fabric
- Pockets
- Waterbased printed logo and chevrons
- Regular fit

204053 : 116 128 140 152 164 176
203533 : S M L XL 2XL 3XL

DKK 179,95
DKK 199,95



2001 BLACK 2006 GREY MELANGE 7026 MARINE



HMLGO COTTON BERMUDA SHORTS WOMAN

- 80% cotton, 20% polyester
- Sweat fabric
- Pockets
- Waterbased printed logo and chevrons
- Regular fit

203532 : XS S M L XL 2XL

DKK 199,95



2001 BLACK 2006 GREY MELANGE 7026 MARINE



HMLGO COTTON SWEATSHIRT

- 80% cotton, 20% polyester
- Sweat fabric
- Waterbased printed logo and chevrons
- Regular fit

203506 : 116 128 140 152 164 176
203505 : S M L XL 2XL 3XL

DKK 199,95
DKK 249,95



HMLGO COTTON SWEATSHIRT WOMAN

- 80% cotton, 20% polyester
- Sweat fabric
- Waterbased printed logo and chevrons
- Regular fit

203507 : XS S M L XL 2XL

DKK 249,95



HMLGO COTTON HOODIE

- Main: 80% cotton, 20% polyester / Lining: 100% polyester
- Main: Sweat fabric / Lining: mesh fabric
- Waterbased printed logo and chevrons
- String in hood in adult sizes
- Regular fit

203509 : 116 128 140 152 164 176
203508 : S M L XL 2XL 3XL

DKK 249,95
DKK 299,95



HMLGO COTTON HOODIE WOMAN

- Main: 80% cotton, 20% polyester / Lining: 100% polyester
- Main: Sweat fabric / Lining: mesh fabric
- Waterbased printed logo and chevrons
- String in hood
- Regular fit

203510 : XS S M L XL 2XL

DKK 299,95



HMLGO COTTON LOGO SWEATSHIRT

- 80% cotton, 20% polyester
- Sweat fabric
- Waterbased printed logo
- Regular fit

203516 : 116 128 140 152 164 176
203515 : S M L XL 2XL 3XL

DKK 199,95
DKK 249,95



HMLGO COTTON LOGO SWEATSHIRT WOMAN

- 80% cotton, 20% polyester
- Sweat fabric
- Waterbased printed logo
- Regular fit

203519 : XS S M L XL 2XL

DKK 249,95



HMLGO COTTON LOGO HOODIE

- Main: 80% cotton, 20% polyester / Lining: 100% polyester
- Main: Sweat fabric / Lining: mesh fabric
- Waterbased printed logo
- String at hood for adult sizes
- Regular fit

203512 : 116 128 140 152 164 176
203511 : S M L XL 2XL 3XL

DKK 249,95
DKK 299,95



HMLGO COTTON LOGO HOODIE WOMAN

- Main: 80% cotton, 20% polyester / Lining: 100% polyester
- Main: Sweat fabric / Lining: mesh fabric
- Waterbased printed logo
- String in hood
- Regular fit

203517 : XS S M L XL 2XL

DKK 299,95



HMLGO COTTON ZIP HOODIE

- Main: 80% cotton, 20% polyester / Lining: 100% polyester
- Main: Sweat fabric / Lining: mesh fabric
- Waterbased printed logo and chevrons
- String in hood in adult sizes
- Regular fit

204231 : 116 128 140 152 164 176
204230 : S M L XL 2XL 3XL

DKK 299,95
DKK 349,95



HMLGO COTTON ZIP HOODIE WOMAN

- Main: 80% cotton, 20% polyester / Lining: 100% polyester
- Main: Sweat fabric / Lining: mesh fabric
- Waterbased printed logo and chevrons
- String in hood
- Regular fit

204232 : XS S M L XL 2XL

DKK 349,95



HMLGO COTTON PANT

- 80% cotton, 20% polyester
- Sweat fabric
- Pockets
- Waterbased printed logo and chevrons
- Regular fit

203531 : 116 128 140 152 164 176
203530 : S M L XL 2XL 3XL

DKK 199,95
DKK 249,95



HMLGO COTTON PANTS WOMAN

- 80% cotton, 20% polyester
- Sweat fabric
- Pockets
- Waterbased printed logo and chevrons
- Regular fit

204173 : XS S M L XL 2XL

DKK 249,95



HMLCIMA T-SHIRT

- 85% cotton, 10% viscose, 5% elastane
- Jersey fabric
- High density printed logo and chevrons
- Regular fit

205506 : 152 164 176
205505 : S M L XL 2XL 3XL

DKK 199,95
DKK 249,95



HMLCIMA T-SHIRT WOMAN

- 85% cotton, 10% viscose, 5% elastane
- Jersey fabric
- High density printed logo and chevrons
- Regular fit

205507 : XS S M L XL 2XL

DKK 249,95



HMLCIMA SHORTS

- 100% polyester
- Sweat fabric
- High density printed logo
- Waterbased printed stripe
- Zipper pockets

205500 : 152 164 176
205499 : S M L XL 2XL 3XL

DKK 299,95
DKK 349,95



HMLCIMA SHORTS WOMAN

- 100% polyester
- Sweat fabric
- High density printed logo
- Waterbased printed stripe
- Zipper pockets

205501 : XS S M L XL 2XL

DKK 349,95



HMLCIMA HOODIE

- 100% polyester
- Sweat fabric
- High density printed logo
- Waterbased printed stripe
- Zipper pockets

205488 : 152 164 176
205487 : S M L XL 2XL 3XL

DKK 449,95
DKK 499,95



2001
BLACK

6575
LAUREL WREATH

7026
MARINE



HMLCIMA ZIP JACKET

- 100% polyester
- Sweat fabric
- High density printed logo
- Waterbased printed stripe
- Zipper pockets

205494 : 152 164 176
205493 : S M L XL 2XL 3XL

DKK 499,95
DKK 549,95



2001
BLACK

6575
LAUREL WREATH

7026
MARINE



HMLCIMA PANTS

- 100% polyester
- Sweat fabric
- High density printed logo
- Waterbased printed stripe
- Zipper pockets

205497 : 152 164 176
205496 : S M L XL 2XL 3XL

DKK 349,95
DKK 399,95



2001
BLACK

7026
MARINE



HMLCIMA HOODIE WOMAN

- 100% polyester
- Sweat fabric
- High density printed logo
- Waterbased printed stripe
- Zipper pockets

205489 : XS S M L XL 2XL

DKK 499,95



2001
BLACK

4169
CADET MELANGE

7026
MARINE



HMLCIMA ZIP JACKET WOMAN

- 100% polyester
- Sweat fabric
- High density printed logo
- Waterbased printed stripe
- Zipper pockets

205495 : XS S M L XL 2XL

DKK 549,95



2001
BLACK

4169
CADET MELANGE

7026
MARINE



HMLCIMA PANTS WOMAN

- 100% polyester
- Sweat fabric
- High density printed logo
- Waterbased printed stripe
- Zipper pockets

205498 : XS S M L XL 2XL

DKK 399,95



2001
BLACK

7026
MARINE



HMLMOVE CLASSIC HOODIE

- Interlock fabric
- Logo embroidery
- Chevron tape
- String in hood in adult sizes
- Regular fit

206922 : 152 164 176
206921 : S M L XL 2XL 3XL

DKK 349,95
DKK 399,95



2001
BLACK

2006
GREY MELANGE

6740
ROSIN



HMLMOVE CLASSIC ZIP JACKET

- Interlock fabric
- Logo embroidery
- Chevron tape
- Zipper pockets
- Regular fit

206925 : 128 140 152 164 176
206924 : S M L XL 2XL 3XL

DKK 449,95
DKK 499,95



2001
BLACK

2006
GREY MELANGE

6740
ROSIN



HMLMOVE CLASSIC PANTS

- Interlock fabric
- Logo embroidery
- Chevron tape
- Regular fit

206928 : 128 140 152 164 176
206927 : S M L XL 2XL 3XL

DKK 299,95
DKK 349,95



2001
BLACK

2006
GREY MELANGE

6740
ROSIN

7026
MARINE



HMLMOVE CLASSIC SHORTS

- Interlock fabric
- Logo embroidery
- Chevron tape
- Regular fit

206931 : 128 140 152 164 176
206930 : S M L XL 2XL 3XL

DKK 249,95
DKK 299,95



2001
BLACK

2006
GREY MELANGE

6740
ROSIN

7026
MARINE



HMLMOVE CLASSIC HOODIE WOMAN

- Interlock fabric
- Logo embroidery
- Chevron tape

206923 : XS S M L XL 2XL

DKK 399,95



2001
BLACK

2006
GREY MELANGE

7050
BERING SEA



HMLMOVE CLASSIC ZIP JACKET WOMAN

- Interlock fabric
- Logo embroidery
- Chevron tape
- Zipper pockets

206926 : XS S M L XL 2XL

DKK 499,95



2001
BLACK

2006
GREY MELANGE

7050
BERING SEA



HMLMOVE CLASSIC PANTS WOMAN

- Interlock fabric
- Logo embroidery
- Chevron tape
- Zipper pockets

206929 : XS S M L XL 2XL

DKK 349,95



2001
BLACK

2006
GREY MELANGE

7050
BERING SEA



HMLMOVE BEANIE

- 100% acrylic
- Knit
- Regular fit

206951 : ONE SIZE

DKK 149,95



6086
DARK OLIVE



7026
MARINE

HMLMOVE NECK TUBE

- 92% polyester, 8% elastane
- Jersey fabric
- Regular fit

206952 : ONE SIZE

DKK 99,95



2001
BLACK



HMLMOVE POLO

- Piqué fabric
- Logo embroidery
- Regular fit

206935 : S M L XL 2XL 3XL

DKK 249,95



2001
BLACK



2006
GREY MELANGE



7026
MARINE



HMLMOVE POLO WOMAN

- Piqué fabric
- Logo embroidery
- Regular fit

206937 : XS S M L XL 2XL

DKK 249,95



2006
GREY MELANGE



7026
MARINE



HMLMOVE T-SHIRT

- Jersey fabric
- Logo embroidery
- Regular fit

206933 : 128 140 152 164 176
206932 : S M L XL 2XL 3XL

DKK 149,95

DKK 199,95



2001
BLACK



2006
GREY MELANGE



6086
DARK OLIVE



HMLMOVE T-SHIRT WOMAN

- Jersey fabric
- Logo embroidery

206934 : XS S M L XL 2XL

DKK 199,95



2001
BLACK



7050
BERING SEA



9094
VANILLA ICE



HMLSIGGE T-SHIRT S/S

- 96 % cotton, 4 % elastane
- Jersey fabric
- 3D printed logo
- Regular fit

206424 : S M L XL 2XL

DKK 179,95



1009
BLACK IRIS

2001
BLACK

9001
WHITE



HMLASTON ZIP HOODIE

- 90% polyester, 10% elastane
- Jersey fabric
- Mild brushed
- Zipperpocket at sides
- Zippergarage
- String and stopper in hood in adult sizes

- Rubber printed logo and chevrons
- Reflective stripe print at back
- Regular fit

207689 : 152 164

206488 : S M L XL 2XL

DKK 499,95

DKK 499,95



2001
BLACK

2007
DARK GREY MELANGE

2995
BLACK IRIS MELANGE



HMLASTON TAPERED PANTS

- 90% polyester, 10% elastane
- Jersey fabric
- Mild brushed
- Reflective printed stripe at back leg

- Zipperpocket at sides
- Rubber printed logo and chevrons
- Tapered

207690 : 152 164

206490 : S M L XL 2XL

DKK 399,95

DKK 399,95



2001
BLACK

2007
DARK GREY MELANGE



HMLNATHAN ZIP JACKET

- 95% micropolyester, 5% elastane
- Interlock fabric
- Embroidery logo
- Zipper pockets
- Chevron tape at sleeve
- Regular fit

202941 : S M L XL 2XL 3XL

DKK 399,95



1009
BLACK IRIS

1968
QUARRY



HMLNATHAN PANTS

- 95% micropolyester, 5% elastane
- Interlock fabric
- Embroidery logo
- Zipper pockets
- Chevron tape at side leg

202942 : S M L XL 2XL 3XL

DKK 349,95



1009
BLACK IRIS

1968
QUARRY



HMLNATHAN ZIP JACKET

- 95% micropolyester, 5% elastane
- Interlock fabric
- Embroidery logo
- Zipper pockets
- Chevron tape at sleeve
- Regular fit

200627 : S M L XL 2XL

DKK 399,95



2520
CAVIAR/
CAVIAR



HMLNATHAN PANTS

- 95% micropolyester, 5% elastane
- Interlock fabric
- Embroidery logo
- Zipper pockets
- Chevron tape at side leg
- Regular fit

200629 : S M L XL 2XL

DKK 349,95



2520
CAVIAR/
CAVIAR



HMLNELLY ZIP JACKET

- 95% micropolyester, 5% elastane
- Interlock fabric
- Embroidery logo
- Zipper pockets
- Chevron tape at sleeve
- Regular fit

203041 : XS S M L XL 2XL

DKK 399,95



1009
BLACK IRIS

1968
QUARRY



HMLNELLY PANTS

- 95% micropolyester, 5% elastane
- Interlock fabric
- Embroidery logo
- Chevron tape at side leg
- Side pockets
- Slim fit

203042 : XS S M L XL 2XL

DKK 349,95



1009
BLACK IRIS

1968
QUARRY



HMLNELLY ZIP JACKET

- 95% micropolyester, 5% elastan
- Interlock fabric
- Embroidery logo
- Zipper pockets
- Chevron tape at sleeve
- Regular fit

200626 : XS S M L XL

DKK 399,95



2520
CAVIAR/
CAVIAR



HMLNELLY PANTS

- 95% micropolyester, 5% elastane
- Interlock fabric
- Embroidery logo
- Chevron tape at side leg
- Side pockets
- Slim fit

200628 : XS S M L XL

DKK 349,95



2520
CAVIAR/
CAVIAR



HMLTROPPER ZIP JACKET

- 80% polyester, 15% viscose, 5% elastane
- Interlock fabric
- Zipper pockets
- Badge
- Regular fit

208409 : S M L XL 2XL

DKK 499,95



2001
BLACK



2006
GREY MELANGE



HMLTROPPER SWEATSHIRT

- 80% polyester, 15% viscose, 5% elastane
- Interlock fabric
- Zipperpocket at front chest
- Badge
- Regular fit
- Recycled fabric

206272 : S M L XL 2XL

DKK 399,95



2001
BLACK



2995
BLACK IRIS MELANGE



HMLTROPPER TAPERED PANTS

- 80% polyester, 15% viscose, 5% elastane
- Interlock fabric
- Zipper pockets
- Badge
- 3D printed chevrons
- Tapered

206273 : S M L XL 2XL

DKK 399,95



2001
BLACK



2006
GREY MELANGE



HMLTROPPER SHORTS

- 80% polyester, 15% viscose, 5% elastane
- Interlock fabric
- Zipper pockets
- Badge
- 3D printed chevrons
- Regular fit

206274 : S M L XL 2XL

DKK 349,95



2006
GREY MELANGE



HMLESSI ZIP JACKET

- 80% polyester, 15% viscose, 5% elastane
- Interlock fabric
- Zipper pocket at sides
- Woven badge
- Regular fit

208410 : XS S M L XL

DKK 499,95



2001
BLACK

2006
GREY MELANGE



HMLESSI TAPERED PANTS

- 80% polyester, 15% viscose, 5% elastane
- Interlock fabric
- Zipperpocket at sides
- Badge
- 3D printed chevrons
- Tapered

206266 : XS S M L XL

DKK 399,95



2001
BLACK

2006
GREY MELANGE



HMLSELBY ZIP HOODIE

- 90% polyester, 10% elastane
- Jersey fabric
- Mild brushed at backside
- Zipperpocket at sides
- Zippergarage

- String and stopper at hood
- Rubber printed logo and chevrons
- Reflective stripe print at back
- Regular fit

207687 : XS S M L XL

DKK 499,95



2001
BLACK

2007
DARK GREY MELANGE

2995
BLACK IRIS MELANGE



HMLSELBY TAPERED PANTS

- 90% polyester, 10% elastane
- Jersey fabric
- Mild brushed on backside
- Zipperpockets at front
- Rubber printed logo and chevrons
- Reflective stripe print at back leg
- Tapered

206262 : XS S M L XL

DKK 399,95



2001
BLACK

2007
DARK GREY MELANGE



HMLNORTH HYBRID JACKET

- Main: 100% polyester / Lining: 100% polyester / Padding: 100% polyester
- Upperpart softshell fabric WP3000 with fleece backside, bottompart woven rip stop fabric
- Waterbased printed logo
- Waterproof logo zipper tape
- String for regulation at bottom

- Zipper pockets at sides and right uppersleeve
- Inner pocket
- Zipper garage at centre front
- Regular fit
- Fluorine free water repellent

206681 : S M L XL 2XL 3XL

DKK 799,95



1006
BLACK/
ASPHALT



6084
GRAPELEAF



7026
MARINE



HMLNORTH SOFTSHELL JACKET

- 100% polyester
- Softshell fabric WP3000 with fleece backside
- Waterbased printed logo
- Waterproof logo zipper tape
- String for regulation at bottom
- Zipper pockets at sides and left uppersleeve

- Zipper garage at centre front
- 1525 and 7026 only available in adult sizes
- Regular fit
- Fluorine free water repellent

206696 : 116 128 140 152 164 176
206685 : S M L XL 2XL 3XL

DKK 499,95
DKK 599,95



1006
BLACK/
ASPHALT



1525
ASPHALT



7026
MARINE



HMLNORTH QUILTED HOOD JACKET

- Main: 100% polyester / Lining: 100% polyester / Padding: 100% polyester
- Woven rip stop fabric
- Waterbased printed logo
- Padding
- Waterproof logo zipper tape

- Zipper pockets at sides and right uppersleeve
- Inner pocket
- Zipper garage at centre front
- Regular fit

206695 : 116 128 140 152 164 176
206687 : S M L XL 2XL 3XL

DKK 499,95
DKK 599,95



1006
BLACK/
ASPHALT



3062
TRUE RED



7026
MARINE



7045
TRUE BLUE



HMLNORTH FULL ZIP FLEECE JACKET

- 100% polyester
- Fleece fabric
- Logo embroidery
- Waterproof logo zipper tape
- Zipper pockets at sides
- Zipper garage at center front
- Regular fit

206693 : S M L XL 2XL 3XL

DKK 399,95



1006
BLACK/
ASPHALT



7026
MARINE



HMLNORTH HYBRID JACKET WOMAN

- Main: 100% polyester / Lining: 100% polyester / Padding: 100% polyester
- Upperpart softshell fabric WP3000 with fleece backside, bottompart woven rip stop fabric
- Waterbased printed logo
- Waterproof logo zipper tape
- String for regulation at bottom

- Zipper pockets at sides and right uppersleeve
- Inner pocket
- Zipper garage at centre front
- Regular fit
- Fluorine free water repellent

206682 : XS S M L XL 2XL

DKK 799,95



1006
BLACK/
ASPHALT

1525
ASPHALT

3822
CROWN JEWEL



HMLNORTH SOFTSHELL JACKET WOMAN

- 100% polyester
- Softshell fabric WP3000 with fleece backside
- Waterbased printed logo
- Waterproof logo zipper tape
- String for regulation at bottom
- Zipper pockets at sides and left uppersleeve

- Zipper garage at centre front
- Regular fit
- Fluorine free water repellent

206686 : XS S M L XL 2XL

DKK 599,95



1006
BLACK/
ASPHALT

3822
CROWN JEWEL

7026
MARINE



HMLNORTH QUILTED HOOD JACKET WOMAN

- Main: 100% polyester / Lining: 100% polyester / Padding: 100% polyester
- Woven rip stop fabric
- Waterbased printed logo
- Padding
- Waterproof logo zipper tape

- Zipper pockets at sides and right uppersleeve
- Inner pocket
- Zipper garage at centre front
- Regular fit

206688 : XS S M L XL 2XL

DKK 599,95



1006
BLACK/
ASPHALT

3062
TRUE RED

7026
MARINE

7045
TRUE BLUE



HMLNORTH FULL ZIP FLEECE JACKET WOMAN

- 100% polyester
- Fleece fabric
- Logo embroidery
- Waterproof logo zipper tape
- Zipper pockets at sides
- Zipper garage at center front
- Regular fit

206694 : XS S M L XL 2XL

DKK 399,95



1006
BLACK/
ASPHALT

3062
TRUE RED

7026
MARINE

7045
TRUE BLUE



HMLNORTH SHELL JACKET

- Main: 100% polyester / Lining: 100% polyester
- Woven rip stop fabric
- PU coating
- WP3000
- Waterbased printed logo
- Waterproof logo zipper tape
- String for regulation at bottom
- Zipper pockets at sides
- Thumbhole at inner cuff
- Zipper garage at centre front
- Detachable hood
- Inner pocket
- Regular fit
- Fluorine free water repellent

206683 : S M L XL 2XL 3XL

DKK 999,95



1006
BLACK/
ASPHALT



7026
MARINE



HMLNORTH PARKA JACKET

- Main: 100% polyester / Lining: 100% polyester / Padding: 100% polyester
- Woven fabric WP3000
- Padding
- 3D printed logo
- Waterbased print inside collar
- Zipper pockets at sides and right uppersleeve
- Inner pocket
- String for regulation at hood and bottom
- Regular fit
- Fluorine free water repellent

206689 : S M L XL 2XL 3XL

DKK 899,95



1006
BLACK/
ASPHALT



7026
MARINE



HMLNORTH WAISTCOAT

- Main: 100% polyester / Lining: 100% polyester / Padding: 100% polyester
- Woven rip stop fabric
- Padding
- Waterbased printed logo
- Waterproof logo zipper tape
- Zipper pockets at sides
- Inner pocket
- Zipper garage at centre front
- Regular fit

206691 : S M L XL 2XL 3XL

DKK 499,95



1006
BLACK/
ASPHALT



7026
MARINE



HMLNORTH SHELL JACKET WOMAN

- Main: 100% polyester / Lining: 100% polyester
- Woven rip stop fabric
- PU coating
- WP3000
- Waterbased printed logo
- Waterproof logo zipper tape
- String for regulation at bottom
- Zipper pockets at sides
- Thumbhole at inner cuff
- Zipper garage at centre front
- Detachable hood
- Inner pocket
- Regular fit
- Fluorine free water repellent

206684 : XS S M L XL 2XL

DKK 999,95



1006
BLACK/
ASPHALT

7026
MARINE



HMLNORTH PARKA JACKET WOMAN

- Main: 100% polyester / Lining: 100% polyester / Padding: 100% polyester
- Woven fabric WP3000
- Padding
- 3D printed logo
- Waterbased print inside collar
- Zipper pockets at sides and right uppersleeve
- Inner pocket
- String for regulation at hood and bottom
- Regular fit
- Fluorine free water repellent

206690 : XS S M L XL 2XL

DKK 899,95



1006
BLACK/
ASPHALT

7026
MARINE



HMLNORTH WAISTCOAT WOMAN

- Main: 100% polyester / Lining: 100% polyester / Padding: 100% polyester
- Woven rip stop fabric
- Padding
- Waterbased printed logo
- Waterproof logo zipper tape
- Zipper pockets at sides
- Inner pocket
- Zipper garage at centre front
- Regular fit

206692 : XS S M L XL 2XL

DKK 499,95



1006
BLACK/
ASPHALT

7026
MARINE





hmlMove Classic Zip Jacket **206924**
& hmlMove Classic Pants **206927**



hmlMove Polo **206935**
& hmlMove Classic Pants **206927**



hmlMove Classic Zip Jacket **206924**



SHARE
THE
GAME





hmlCima Hoodie Women **205489**
& hmlCima Pants Woman **205498**



hummel



hummel



SHARE
THE
GAME



hummel

SOCKS & ACCESSORIES



- **FUNCTIONAL BASICS FOR ENHANCED SUPPORT AND PERFORMANCE**
- **NECESSITIES FOR EVERY SPORT**
- **MULTIPLE COLOUR OPTIONS AND SIZES**

Perfect fundamentals for a good game. No matter the level and no matter the sport, players need the right fundamentals to ensure a top performance. From socks to wristbands, resin gel to ball pumps and tow-

els to gloves, our Socks & Accessories collection offers a wide range of basics – in all sizes and in a wide array of colours.

PRO FOOTBALL SOCK

- 82% Polyamide / 6% Polyester / 6% Cotton / 6% Elastane
- Moisture management
- Padded ankle protection
- Reinforced heel, toe and ankle section to help shock absorption

- Arch support
- Applies to UEFA and FIFA regulations
- Tight fit

201160 : 8 (32-35) 10 (36-40) 12 (41-45) 14 (46-48) DKK 129,95



ELEMENT FOOTBALL SOCK

- 70% polypropylene, 21% polyamide, 7% cotton, 2% elastane
- Moisture management
- Padded ankle protection
- Reinforced heel, toe and ankle sections to help shock absorption

- Arch support
- Airflow mesh
- Regular fit

204046 : 27-30 31-34 35-38 39-42 43-45 46-48 DKK 69,95



ELEMENT FOOTBALL SOCK FOOTLESS

- 62% polypropylene, 36% polyamide, 2% elastane
- Moisture management
- Elasticated Stirrup
- Airflow mesh
- Regular fit

203404 : 1 (JUNIOR) 2 (SENIOR)

DKK 79,95



FUNDAMENTAL 3-PACK SOCK

- 80% Cotton / 17% Polyamide / 3% Elastane
- Moisture Management
- Arch support

022140 : 8 (32-35) 10 (36-40) 12 (41-45) 14 (46-48) DKK 99,95



3-PACK BASIC SOCK

- 80% cotton/20% polyester
- Mid-calf length with contrasting chevrons

022030 : 8 (32-35) 10 (36-40) 12 (41-45) 14 (46-48) DKK 49,95



ANKLE SOCK SMU

- 80% cotton,17% polyester, 3% elastane
- Rib effect at mid-foot to give snug fit
- Size knitted into the sock

022129 : 8 (32-35) 10 (36-40) 12 (41-45) 14 (46-48) DKK 49,95



ELITE INDOOR SOCK LOW

- 36% polypropylene, 42% polyamide, 8% polyester, 6% elastane Padded heel and toe for protective cushioning from high-impact pressure
- Moisture management
- Anti bacterial treatment in the heel and toe
- Arch support
- Airflow mesh
- Regular fit
- Antibacterial

204043 : 27-30 31-34 35-38 39-42 43-45 46-48 DKK 89,95



ELITE INDOOR SOCK HIGH

- 35% polypropylene, 47% polyamide, 6% polyester, 6% cotton, 6% elastane
- Moisture management
- Anti bacterial treatment in the heel and toe
- Padded heel and toe for protective cushioning from high impact pressure
- Arch support
- Airflow mesh
- Regular fit
- Antibacterial

204044 : 27-30 31-34 35-38 39-42 43-45 46-48 DKK 99,95



ELITE COMPRESSION SOCK

- 93% polyamid 7% elastane
- Moisture management
- Graduated Compression
- Muscle support
- Protective cushioning in the toe and heel
- Regular fit

203405 : 1 (25-31 CM) 2 (32-38 CM) 3 39-44 CM) 4 (45-50 CM) DKK 199,95



ELEMENT INDOOR SPORT SOCK 2 PACK

- 84% polyamide, 5% polyester, 5% cotton, 6% elastane
- Moisture management
- Antibacterial treatment in the heel and toe
- Arch support
- Regular fit
- Antibacterial

204045 : 27-30 31-34 35-38 39-42 43-45 46-48 DKK 119,95



HUMMEL TRAINING BEANIE

- 100% polyester / Lining: 92% polyester 8% elastane
- Fleece fabric / Jersey fabric
- Logo embossing
- Logo print at reversed side
- All over print at reversed side

208916 : ONE SIZE

DKK 119,95



2001
BLACK



HUMMEL TRAINING HAT

- 100% acrylic
- Knit fabric
- Fold-up cuff

208914 : ONE SIZE

DKK 99,95



2001
BLACK



BASIC CAP

- 100% polyester
- Light-weight cap
- Adjustable strap on back
- Airhole ventilation
- Buckle CB to adjust size

089066 : ONE SIZE

DKK 119,95



2001
BLACK



LIGHT WEIGHT PLAYER GLOVES

- 100% polyester
- Silicon-fused grip detail
- Embroidered chevrons

041441 : 2XS XS S M L XL

DKK 149,95



2001
BLACK



COLD WINTER PLAYER GLOVES

- 100% polyester fleece
- Silicon-fused grip detail
- Wristband-strap with velcro closure
- Embroidered chevrons

041442 : 2XS XS S M L XL

DKK 119,95



2001
BLACK



HUMMEL NECK TUBE

- 92% polyester, 8% elastane
- Jersey fabric with brushed backside
- Dull shadow printed logo

208917 : ONE SIZE

DKK 99,95



2001
BLACK



HUMMEL OLD SCHOOL SMALL TOWEL

- 100% cotton
- Terry fabric
- Jacquard knitted towel with logo and chevrons
- Size: L:100 x W:50 cm

208804 : ONE SIZE

DKK 149,95



1525
ASPHALT

2001
BLACK



HUMMEL OLD SCHOOL LARGE TOWEL

- 100% cotton
- Terry fabric
- Jacquard knitted towel with logo and chevrons
- Size: L:160 x W:70 cm

208805 : ONE SIZE

DKK 199,95



1525
ASPHALT

2001
BLACK



OLD SCHOOL BIG WRISTBAND

- 95% cotton, 5% lycra
- Terry loop sweatbands with embroidered logo
- Sort. 10 pcs per colour
- Price listed is per piece

099014 : ONE SIZE

DKK 49,95



2114
BLACK/
WHITE

3946
TRUE RED/
WHITE

6101
SPORTS GREEN/
WHITE

7691
TRUE BLUE/
WHITE

9124
WHITE/
BLACK



OLD SCHOOL SMALL WRISTBAND

- 95% cotton, 5% lycra
- Terry loop sweatbands with embroidered logo
- Sort. 10 pcs per colour
- Price listed is per piece

099015 : ONE SIZE

DKK 49,95



2114
BLACK/
WHITE

3946
TRUE RED/
WHITE

6101
SPORTS GREEN/
WHITE

7691
TRUE BLUE/
WHITE

9124
WHITE/
BLACK



FUNDAMENTAL TRAINING BIB

- 100% polyester
- Mesh bib with contrasting seam binding
- Contrasting hummel print on center front

105002 : 8 (MINI)
005002 : S (JUNIOR) XL (SENIOR)

DKK 49,95
DKK 49,95



3-PACK HEADBAND 17-18

- 41% latex, 41% nylon, 18% polyester
- Elastic headbands with hummel chevrons

098153 : ONE SIZE

DKK 149,95



9475
WHITE/
BLACK/
TRUE RED



HUMMEL BALL PUMP

- Double action ball pump
- Flexible extendable tube
- Metal vinyl
- Integrated vinyl storage
- One size

099000 : ONE SIZE

DKK 59,95



2001
BLACK



OLD SCHOOL CAPTAINS BAND

- 94% polyester/ 6% rubber
- Single colour armband with printed logo

099164 : ONE SIZE

DKK 49,95



5067
FLOURECENT GREEN/
BLACK

7268
MARINE/
SILVER



HMLWATERBOTTLE

- 100% Polypropylene
- 600 ml
- Drip free spout

205345 : ONE SIZE

DKK 79,95



9001
WHITE



HMLWATERBOTTLE CARRIER

- Carrier for 6 bottles

205346 : ONE SIZE

DKK 149,95



9001
WHITE



HMLRE-GRIP

- Contents: Acrylic resin, emulsion and water
- For treatment of hummel grip handballs
- 200ml
- Price listed is per piece
- Sort. 12 pcs.

205347 : ONE SIZE

DKK 149,95



9001
WHITE



HUMMEL VALVE OIL

- Use before inflating your hummel ball
- 1-2 drops in valve to avoid leakage/drying valve
- Price listed is per piece
- Sort. 5 pcs.
- 10ml

099299 : ONE SIZE

DKK 19,95



2001
BLACK



HUMMEL RESIN REMOVER

- Removes all types of resin
- Creamy consistency
- Price listed is per piece
- Sort. 4 pcs.
- 500ml

099298 : ONE SIZE

DKK 99,95



2001
BLACK



HUMMEL RESIN GEL SMALL

- Contents: nature resin, vegetable oils and thickening agent
- Price listed is per piece
- Sort. 8 pcs.
- 100ml

099297 : ONE SIZE

DKK 119,95



9001
WHITE



HUMMEL RESIN GEL BIG

- Contents: nature resin, vegetable oils and thickening agent
- Price listed is per piece
- Sort. 4 pcs.
- 500ml

099303 : ONE SIZE

DKK 449,95



9001
WHITE



HUMMEL RESIN NATURAL SMALL

- Contents: nature resin, vegetable oils
- Price listed is per piece
- Sort. 8 pcs.
- 100ml

099296 : ONE SIZE

DKK 119,95



9001
WHITE



HUMMEL RESIN NATURAL BIG

- Contents: nature resin, vegetable oils
- Price listed is per piece
- Sort. 4 pcs.
- 500ml

099302 : ONE SIZE

DKK 449,95



9001
WHITE



SHARE THE GAME SHARE THE GAME SHARE THE GAME SHARE THE GAME SHARE THE GAME
SHARE THE GAME SHARE THE GAME SHARE THE GAME SHARE THE GAME SHARE THE GAME

SHARE THE GAME SHARE THE GAME SHARE THE GAME SHARE THE GAME SHARE THE GAME
SHARE THE GAME SHARE THE GAME SHARE THE GAME SHARE THE GAME SHARE THE GAME



IC VARDAR

Immer

DIJKSTERHUIS
ROSKI
RK VARDAR

EQUIPMENT BAGS



hummel offers a wide range of functional and versatile bags in a variety of designs, sizes, colors and functional details. They feature handles and/or straps for easy carrying, large and small compartments with or without zippers, quality print, compression straps for adjustable sizing and water repellent.

SPORT

The sports bags are developed for teamsport. The collection offers a traditional program of sports bags, back packs and trolleys for teams. The bags offer great printability and a stylish hummel branding.

URBAN

The new urban bags are developed for the individual consumer, but the collection is also an obvious solution for teams looking for something extra. The styles offer a cool street-inspired design with a clear urban vibe.

LIFESTYLE

hummel's lifestyle collection is an exclusive range of bags developed for professional clubs and the individual retail consumer. The styles are characterized by a clean Scandinavian look with discreet hummel branding and a water repellent surface.

CORE SPORTS BAG

- 100% Polyester, woven fabric with PU coating on backside
- Lining: 100% Polyester
- Silver printed logos and chevrons
- Bottom stabilizer and inside zip pocket
- Carrying handles
- Adjustable shoulder strap
- Shoulder protective pad
- End zip pocket
- Size:
- XS: Max weight 4 KG = 20 L
- S: Max weight 6 KG = 31 L
- M: Max weight 9 KG = 45 L
- L: Max weight 12 KG = 69 L

204012 : XS S M L DKK XS: 149,95 S: 199,95 M: 249,95 L: 299,95



2001
BLACK

2006
GREY MELANGE

3081
TRUE RED/
BLACK

7026
MARINE

7079
TRUE BLUE/
BLACK



CORE FOOTBALL BAG

- Main: 100% polyester / Lining: 100% polyester
- Woven fabric
- Printed logo and chevrons
- Hidden piping detail
- Bottom compartment with room for shoes or wet items
- Adjustable shoulder strap
- Carry handles with padded handle gathering
- Size S: L41xH35xW26 cm, 37 liter - Max weight: 6 kg
- Size L: L53xH40xW31 cm, 65 liter - Max weight: 10 kg

207140 : S L

DKK S: 299,95 L: 349,95



2001
BLACK

3062
TRUE RED

7045
TRUE BLUE



CORE TEAM BAG

- Main: 100% polyester / Lining: 100% polyester
- Woven fabric
- Printed logo and chevrons
- Hidden piping details
- Bottom stabilizer
- Adjustable shoulder strap with padded shoulder protection
- Carry handles with padded handle gathering
- Size: L80xW42xH35 cm, 118 liter - Max weight: 25 kg

207141 : ONE SIZE

DKK 349,95



2001
BLACK



CORE TROLLEY

- Main: 100% polyester / Lining: 100% polyester
- Woven fabric
- Printed logo and chevrons
- Hidden piping details
- 2 inside mesh compartments (only 1 mesh compartment in size S)
- Carry handles with padded handle gathering (except size S)
- Extension handle
- Two wheel trolley option
- Size S: L55xW35xH23 cm, 44 liter - Max weight: 10 kg
- Size M: L60xW35xH31 cm, 65 liter - Max weight: 14 kg
- Size L: L75xW35xH34 cm, 89 liter - Max weight: 17 kg

207142 : S M L DKK S: 549,95 M: 599,95 L: 699,95



2001
BLACK



TEAM TROLLEY

- 100% Polyester, woven fabric
- Lining, 100% Polyester
- Printed logo and chevrons
- Piping Details
- Carrying handles with padded handle gathering
- Extension Handle

- Two wheel trolley
- YKK Zipper
- Size: L82 x W39 x H42cm –134 Liters – Max weight: 18KG

202613 : XL

DKK 899,95



2001
BLACK



CORE BALL BACK PACK

- Main: 100% polyester / Lining: 100% polyester
- Woven fabric
- Printed logo and chevrons
- Laptop compatible
- Top zip pocket
- Padded backside and back straps

- Adjustable chest strap
- Expandable side pocket in one side
- Zip pocket in one side
- Mesh net for ball storage in hidden front zip pocket
- Size: H48xW34xD19 cm, 31 liter - Max. weight: 12 kg

205888 : ONE SIZE

DKK 349,95



2001
BLACK



3081
TRUE RED/
BLACK



7079
TRUE BLUE/
BLACK



7464
MARINE/
BLACK



CORE BACK PACK

- Main: 100% polyester / Lining: 100% polyester
- Woven fabric
- Printed logo and chevrons
- Laptop compatible
- Padded backside and back straps

- Expandable pocket
- Front zip pocket
- Size: H44,5xW34xD19 cm, 28 liter - Max. weight: 12 kg

206996 : ONE SIZE

DKK 249,95



2001
BLACK



3062
TRUE RED



7045
TRUE BLUE



CORE GYM BAG

- 100% polyester
- Drawstring closure and backstraps
- Size: H44 x W35 x D6 cm, 5 liter - Max weight: 5 kg
- Screen printed hummel logo and chevrons

204959 : ONE SIZE

DKK 79,95



2001
BLACK



CORE HANDBALL BAG

- Main: 100% polyester / Lining: 100% polyester
- Woven fabric with PU coating on backside
- Printed logo and chevrons
- Adjustable detachable shoulder strap
- Zip opening
- Carrying handles
- Fits a size 3 handball

207144 : ONE SIZE

DKK 99,95



2001
BLACK



CORE BALL BAG

- 100% polyester
- Woven fabric and mesh
- Printed logo and chevrons
- Drawstring for closure
- Fabric bottom with piping detail
- Size S: H60xD53 cm, 132 liter - Max weight: 8kg - fits 10 footballs
- Size L: H105xD53 cm, 230 liter - Max weight: 8kg - fits 16 footballs

207145 : S L

DKK S: 299,95 L: 349,95



2001
BLACK



HUMMEL BALL NET

- 100% Polyethylene, name tag: 100% polyester,
- Woven fabric
- Drawstring for closure
- Name tag attached to string
- Fits 20 footballs
- Max weight: 9kg

040918 : ONE SIZE

DKK 79,95



2250
BLACK/
SILVER



URBAN DUFFEL BAG

- Main: 100% polyester / Lining: 100% polyester
- Woven fabric with PU coating on backside
- Printed logo
- Hidden piping details
- Adjustable detachable shoulder strap with padded shoulder protection
- Front zip pocket
- Stabilizer in bottom of bag
- Size S: H26xW50xD24 cm, 31 liter - Max weight: 6 kg
- Size L: H30xW70xD25 cm, 52 liter - Max weight: 8 kg
- Stabilizer in bottom of bag

207147 : S L

DKK S: 299,95 L: 349,95



1502
BLACK MELANGE



URBAN SPORTS BACK PACK

- Main: 100% polyester / Lining: 100% polyester
- Woven fabric with PU coating on backside
- Printed logo and chevrons
- Laptop compatible
- Adjustable chest strap
- Padded backside and back straps
- Top zip pocket
- 2 small inside pockets
- Size: H42xW30xD18, 32 liter - Max weight: 6 kg

207148 : ONE SIZE

DKK 349,95



1502
BLACK MELANGE



URBAN LAP TOP BACK PACK

- Main: 100% polyester / Lining: 100% polyester
- Woven fabric with PU coating on backside
- Printed logo and chevrons
- Hidden piping details
- Laptop compatible
- Adjustable chest strap
- Padded backside and back straps
- Front zip pocket
- Inside pocket
- Size: H45xW36xD14 cm, 32 liter - Max weight: 7 kg

207149 : ONE SIZE

DKK 449,95



1502
BLACK MELANGE



URBAN LAP TOP SHOULDER BAG

- Main: 100% polyester / Lining: 100% polyester
- Woven fabric with PU coating on backside
- Printed logo and chevrons
- Hidden piping details
- Fully padded
- Adjustable detachable shoulder strap with padded shoulder protection

- 2 zip rooms
- Front zip pocket
- Inside pocket
- Size: H29xW41xD13 cm, 15 liter - Max weight: 4 kg



207152 : ONE SIZE

DKK 349,95



1502
BLACK MELANGE

URBAN SHOULDER BAG

- Main: 100% polyester / Lining: 100% polyester
- Woven fabric with PU coating on backside
- Printed logo
- Hidden piping details
- Small inside zip pocket

- Lining inside bag
- Small inner pocket with zipper
- Size: H40xW50xD12 cm, 24 liter - Max weight: 6 kg
- Small inner pocket with zipper



207151 : ONE SIZE

DKK 199,95



1502
BLACK MELANGE

URBAN BUM BAG

- Main: 100% polyester / Lining: 100% polyester
- Woven fabric with PU coating on backside
- Printed chevrons
- Hidden piping details
- Back zip pocket

- Adjustable waist strap
- Size: H13xW22xD5 cm, 1 liter - Max weight: 1 kg
- Size: H13xW22xD5 cm, 1 liter - Max weight: 2 kg



207150 : ONE SIZE

DKK 199,95



1502
BLACK MELANGE

LIFESTYLE WEEKEND BAG

- 100% PU
- Coated fabric
- Printed logo
- Hidden piping details
- Adjustable detachable shoulder strap with padded shoulder protection
- Small inside zip pocket

- Size M: H28xW49xD22 cm, 30 liter - Max weight 6 kg
- Size L: H30xW60xD25 cm, 45 liter - Max weight 8 kg
- Not suitable for transfer/heat transfer print
- Fluorine free water repellent

207153 : M L

DKK M: 449,95 L: 499,95



2001
BLACK



LIFESTYLE BACK PACK

- 100% PU
- Coated fabric
- Printed logo
- Laptop compatible
- Hidden piping details
- Padded backside and back straps

- Front zip pocket
- Inside small zip pocket
- Inside pocket
- Size: H48xW30xD14 cm, 20 liter - Max weight 4 kg
- Not suitable for transfer/heat transfer print
- Fluorine free water repellent

207155 : ONE SIZE

DKK 499,95



2001
BLACK



LIFESTYLE LAPTOP SHOULDER BAG

- 100% PU / 100% polyester
- Coated fabric / Woven fabric
- Printed logo
- Hidden piping details
- Padded
- Adjustable shoulder strap with padded shoulder protection

- Front zip pocket
- Inside pocket
- Size: H29xW41xD7 cm, 8 liter - Max weight 4 kg
- Not suitable for transfer/heat transfer print
- Fluorine free water repellent

207156 : ONE SIZE

DKK 499,95



2001
BLACK



LIFESTYLE TOILETERY BAG

- 100% PU
- Coated fabric
- Printed logo
- Hidden piping details
- Inside zip pocket
- 2 small inside mesh pockets
- Size: H14xW27xD16 cm, 6 liter - Max weight 2 kg
- Not suitable for transfer/heat transfer print
- Fluorine free water repellent

207154 : ONE SIZE

DKK 199,95



LIFESTYLE BUM BAG

- 100% PU
- Coated fabric
- Printed chevrons
- Hidden piping details
- Back zip pocket
- Adjustable waist strap
- Size: H14xW24xD6 cm, 2 liter - Max weight: 1 kg
- Not suitable for transfer/heat transfer print
- Fluorine free water repellent

207157 : ONE SIZE

DKK 199,95



2001
BLACK



2001
BLACK

SHARE THE GAME SHARE THE GAME SHARE THE GAME
SHARE THE GAME SHARE THE GAME SHARE THE GAME

SHARE THE GAME SHARE THE GAME SHARE THE GAME
SHARE THE GAME SHARE THE GAME SHARE THE GAME



HANDBALLS

- AIRTOUCH CUSHIONING FOR EXTRA SOFTNESS AND BOUNCE
- WOVEN POLY/COTTON LINING THAT STABILIZES AND ADJUSTS SOFTNESS/WEIGHT
- LATEX BLADDER WITH AIRTRAP VALVE FOR AN AIRTIGHT BALL

From professional to practice balls, hummel offers a diverse range for all kinds of players and teams. Reliable handballs with predictable flight and a good bounce are essential. hummel offers a competitive

range of quality handballs – from high-performance match balls to training balls for children. All handballs are made from durable PU (Polyurethane).

HYBRID BALLS



STORM PRO 2.0

High performance hybrid match ball

This white hybrid handball is machine stitched and glued together for a super soft and comfortable feel. A professional handball for the skillful player.



STORM PRO

High performance match & training ball

This glued hybrid-ball is created for extra softness and speed. This elite handball has IHF approval and works well for playful players with lots of tricks.



REGULAR BALLS



CONCEPT PRO

The professional match ball

Approved by the IHF, this elite ball for professional players has a spongy surface for perfect grip.



CONCEPT

The professional training ball

With a slightly thinner PU, the Concept ball is a professional ball suitable for both elite training and high-level matches.



ELITE GRIP

High performance sticky match and training ball

A new sticky grip technology ensures a sticky surface – to replace resin. The handball of the resin free future is here. Suited for elite players for both match and training.



ELITE

High Performance Match and Training ball

With its soft surface, the Elite ball is a favourite among elite female and youth players who use it as both a match and training ball.



PREMIER GRIP

Sticky match and training ball

A new sticky grip technology ensures a sticky surface – to replace resin. With a soft layer of foam this is the ball for quick youth players who value hard balls.



PREMIER

Match and Training ball

With a soft layer of foam instead of the AirTouch cushioning, this is the ball for the quick youth players who value hard balls.



ARENA

Match and Training ball

Entry-level training ball at an affordable price. Not suitable for resin use and therefore mostly a training ball.



ENERGIZER

Basic training gball

This machine stitched handball is designed to last for countless training hours in the training hall. Very suitable for resin, this makes the perfect basic training ball.



KIDS

Specially created for children

With the soft AirTouch surface, this children's ball is created with the smallest players in mind. Not suitable for resin use, it is a durable ball with good grip.



STREET PLAY

Street handball for active play and training

This fun street handball is stuffed with padding and has a PU surface, which makes it very soft and easy to squeeze. The ideal ball for active play and training both indoors and outdoors. Not suitable for resin use.

RUBBER & FOAM BALLS



BEACH

Beach handball for match and training

This rubber based handball is developed to meet the very specific requirements of beach handball. Suited for both match and training.



EASY KIDS

Rubber handball for active play and training

The EASY KIDS handball is made of rubber which gives it a soft surface and makes it easy to grab. The ideal handball for children who want to become familiar with the sport of handball. Not suitable for resin use.

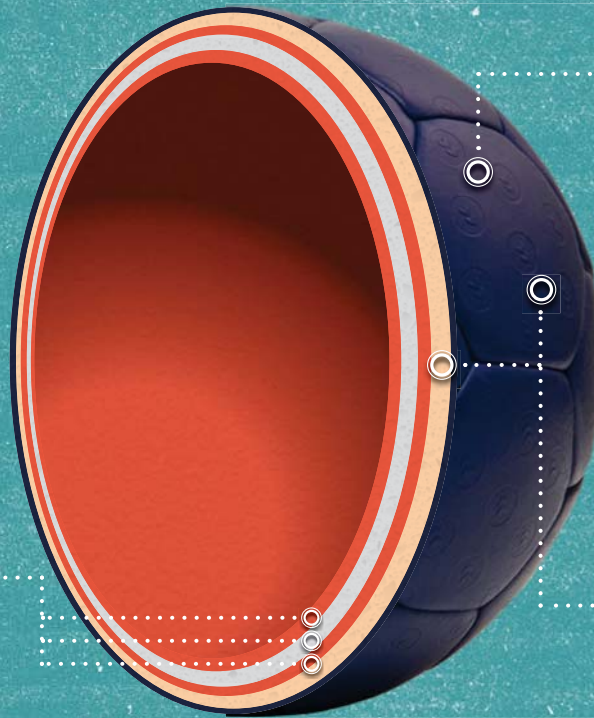


SPUME KIDS

Foam handball for active play and training

This squeazy kids handball made of foam is extremely lightweight and easy to grab. The perfect ball for childrens training and play without resin use.

HYBRID HANDBALLS



UNIQUE DOUBLE BLADDER CONSTRUCTION

Inner and outer rubber bladders reinforced by a cotton and polyester lining for a perfect mix of bounce and stability. The inner bladder makes your ball vivid and bouncy, while the unique second bladder takes the bounce to new heights!

STRONG HYBRID CONSTRUCTION

Hybrid handballs are extra strong and durable. All PU hexagons are machine-stitched and glued together before being hardened under compression giving a super smooth surface and a perfect roundness.

THICK FOAM-BACKED PU SURFACE

With Air Touch foam to back a thick PU surface, you're sure to experience extra softness and a better grip. The PU of Storm Pro has even been upgraded with a microfiber padding providing a whole new dimension of softness.

REGULAR HANDBALLS



TRADITIONAL RUBBER BLADDER

Inner rubber bladder covered by a white cotton and polyester lining giving you a great mix of bounce and stability when you set your ball in motion.

FOAM-BACKED PU SURFACE

All PU hexagons are hand-stitched and backed with foam of different thicknesses depending on the type of ball best suited for your game plan.

HANDBALL INFLATION GUIDE

PREPARATION

During wintertime, we suggest to store the handballs at room temperature (20 – 25°C) for minimum 24 hours before the first inflation in order to secure optimal softness, shape and grip.

VALVE OIL

Drip 1 – 2 drops of hummel valve oil into the valve.
It is important that valve-oil is used at every inflation as it makes the valve seal properly.

INFLATE

Position the valve upwards and insert the inflation needle straight into the valve. Always use a long pump needle to ensure the needle does not damage the valve or the bladder.

CHECK PRESSURE

- Inflate the ball to the recommended pressure.
- Recommended pressure is printed on the ball near the valve.
- Inflate slowly to allow the ball to gain its correct shape.
Rapid inflation can damage the bladder.
- Use a pressure gauge to check the pressure of the ball.

HANDBALL MAINTENANCE GUIDE

BEFORE EACH INFLATION

Always drip 1 – 2 drops of hummel valve oil into the valve before inflation to ensure that it seals properly.

STORAGE

Store the handball in a ventilated room at 20 – 25°C.

WEIGHT AND CIRCUMFERENCE OF HANDBALLS

SIZE	CIRCUMFERENCE	WEIGHT	RECOMMENDED PRESSURE (BAR)
3	58—60 CM	425—435 G	0,3
2	54—56 CM	325—335 G	0,3
1	50—52 CM	290—300 G	0,3
0	46—49 CM	225—235 G	0,4
0.0	44—46 CM	180—200 G	0,4

HMLSTORM PRO 2.0

- 100% PU
- IHF approved
- High performance hybrid match ball
- Microfiber PU
- Chevron surface
- Air-touch foam
- Extra softness
- Latex double bladder
- Air-trap valve
- Suitable for resin
- 26 panels gives smoother surface
- Lighter/Easier feel when played
- 2 years guarantee on glue and shape
- Do not use machine for ball cleaning

203596 : 2 3

DKK 649,95



9134
WHITE/
RED



HMLSTORM PRO

- 100% PU
- IHF approved
- High performance hybrid match ball
- Microfiber PU
- Chevron surface
- Air-touch foam
- Extra softness
- Latex bladder
- Air-trap valve
- Suitable for resin
- Lighter/Easier feel when played
- 2 years guarantee on glue and shape
- Do not use machine for ball cleaning

203597 : 2 3

DKK 499,95



7259
BLUE/
YELLOW



HMLCONCEPT PRO

- 100% PU
- IHF approved
- High performance match ball
- Microfiber PU
- Chevron surface
- Air-touch foam
- Latex bladder
- Air-trap valve
- Suitable for resin
- 2 years guarantee on stitching and shape
- Do not use machine for ball cleaning

203785 : 2 3

DKK 599,95



9272
WHITE/
TURQUOISE



HMLCONCEPT

- 100% PU
- High performance match ball
- Microfiber PU
- Chevron surface
- Air-touch foam
- Latex bladder
- Air-trap valve
- Suitable for resin
- 2 years guarantee on stitching and shape
- Do not use machine for ball cleaning

203601 : 2 3

DKK 499,95



6401
GREEN/
BLUE



HM LELITE GRIP

- 100% PU
- Match and training ball
- Chevron surface
- Air-touch foam
- Latex bladder
- Air-trap valve

- Sticky surface
- Maintain with HUMMEL RE-GRIP
- Leaves no sticker traces
- 2 years guarantee on stitching and shape
- Do not use machine for ball cleaning

203599 : 2 3

DKK 449,95



5995
SAFETY YELLOW/
GREY



HM LELITE

- 100% PU
- High performance match ball
- Chevron surface
- Air-touch foam
- Latex bladder

- Air-trap valve
- Suitable for resin
- 2 years guarantee on stitching and shape

203600 : 2 3

DKK 399,95



3148
RED/
WHITE

5999
SAFETY YELLOW/
TURQUOISE

7156
BLUE/
WHITE



HMLPREMIER GRIP

- 100% PU
- Match and training ball
- Chevron surface
- Soft foam
- Latex bladder
- Air-trap valve

- Maintain with HUMMEL RE-GRIP
- Sticky surface
- Leaves no sticker traces
- 2 years guarantee on stitching and shape
- Do not use machine for ball cleaning

204157 : 1 2 3

DKK 349,95



5112
YELLOW/
WHITE



HMLPREMIER

- 100% PU
- Match and training ball
- Chevron surface
- Soft foam
- Latex bladder

- Air-trap valve
- Suitable for resin
- 2 years guarantee on stitching and shape

203602 : 1 2 3

DKK 299,95



7772
BLUE/ORANGE/
TURQUOISE



HMLARENA

- 100% PU
- Training ball
- Chevron surface
- Soft foam
- Latex bladder
- Air-Trap valve
- Not suitable for resin

203598 : 2 3

DKK 249,95



9241
WHITE/ RED/
BLUE



HMLENERGIZER HB

- 100% PU
- Training ball
- Chevron surface
- Soft foam
- Latex bladder
- Air-Trap valve
- Suitable for resin
- 2 years guarantee on stitching and shape

204156 : 0 1 2 3

DKK 199,95



0361
ORANGE/
BLUE



HMLBEACH

- 100% rubber
- Match and training ball
- Soft rubber surface
- Not suitable for resin

203604 : 2 3

DKK 199,95



3148
RED/
WHITE

7156
BLUE/
WHITE



HMLSTREET PLAY

- 100% PU
- Active play and training ball
- Soft surface
- Not suitable for resin
- Stuffed with padding
- Very soft and easy to squeeze
- Suitable for both indoor and outdoor use

203607 : 0.0 0

DKK 199,95



6000
SAFETY YELLOW/
BLUE NIGHT



HMLKIDS

- 100% PU
 - Match and training ball
 - Chevron surface
 - Air-touch foam
 - Latex bladder
- Air-trap valve
 - Not suitable for resin
 - 2 years guarantee on stitching and shape

203603 : 0.0 0 1

DKK 199,95



3028
PINK/
YELLOW

5307
GREEN/
YELLOW



HMLEASY KIDS

- 100% rubber
- Active play and training ball
- Soft rubber surface
- Not suitable for resin

203606 : 0.0 0 1

DKK 149,95



4110
ORANGE/
WHITE



HMLSPUME KIDS

- 100% PU foam
- Active play and training foam ball
- Soft foam
- Easy to squeeze
- Light and durable

203605 : 0.0 0

DKK 99,95



7018
TURQUOISE/
WHITE



SHARE THE GAME SHARE THE GAME SHARE THE GAME
E SHARE THE GAME SHARE THE GAME SHARE THE GAME

SHARE THE GAME SHARE THE GAME SHARE THE GAME
SHARE THE GAME SHARE THE GAME SHARE THE GAME



FOOTBALLS

- HIGH-PERFORMANCE MATCH, TRAINING AND FUTSAL BALLS
- FIFA-APPROVED MATCH BALLS
- AIRTOUCH CUSHIONING FOR SOFTNESS
- AIRTRAP LATEX BLADDER FOR AIRTIGHTNESS AND LIGHTNESS

From professional, FIFA-approved match balls to futsal balls and balls for children, hummel offers a wide range of carefully developed footballs. Many balls feature special features like AirTouch tech-

nology for soft cushioning and AirTrap latex bladders for responsive, light and airtight balls. All balls are designed with durability in mind, whether they're professional, indoor or practice balls.

THERMO BONDED BALLS



BLADE PRO MATCH

The premium thermo bonded ball

Approved by FIFA, this thermo bonded ball is the top-level bonded ball. With a coarse surface, it's an elite ball perfect for professional matches.



BLADE PRO TRAINER

Thermo bonded training ball

Approved as professional quality match ball this training ball is for the top players. The dual foam layers make it extra soft and easy to control.

HYBRID & KINETIC BALLS



STORM 2.0

Match & Training ball with plenty of bounce

With its smooth surface and dual foam layers, this ball has lots of bounce and energy which makes it suitable for high-level games.



STORM TRAINER

High performance training ball

This training ball is specially developed for training but can be used for games as well and is suitable for both grass, artificial and indoor at top level.



STORM TRAINER LIGHT

Speciality ball for children

This hybrid ball has soft dual foam layers for extra softness. Due to its lightness, it's perfect for children and youth players.



STORM TRAINER ULTRA LIGHT

Ultra light ball for children

Even lighter than the Storm Light, the Storm Ultra-Light caters to beginners and young players who want to practice their ball skills.



FUTSAL STORM

Indoor and outdoor training futsal ball

Created specially for Futsal with moderate bounce, this heavy hybrid ball is a perfect training ball for indoor and outdoor futsal pitches.



FUTSAL STORM LIGHT

Specialty futsal ball for kids and youngsters

With its lightness this futsal ball is perfect for kids and youngsters finely tuning their skills on the pitch. Still with moderate bounce making it perfect for the futsal pitch.

MACHINE- AND HAND STITCHED BALLS



CONCEPT PRO

The top-level professional ball

The absolute top-level ball, which carries FIFA approval. With a microfiber surface for flexibility and control, this hand-sewn match ball is a favourite among pros.



ELITE

High performance match & training ball

With its slightly stiffer surface, the Elite ball feels a bit lighter than Concept Pro. It is perfect for seniors and youth players in both training and matches.



PREMIER

A durable ball for junior players

Especially popular among high-level junior players, this durable ball can be used on both grass and artificial turfs.



ENERGIZER

Leisure play & game ball

With a durable and soft material, the Energizer is designed for playful games and leisure at school, at home or on the pitch.



ENERGIZER LIGHT

A light ball for juniors and children

This light speciality ball makes it easier for children and junior players to practice their skills on grass, artificial turf and indoors.



ENERGIZER ULTRA LIGHT

The light match & training ball

Even lighter than the Energizer Light, the low weight makes this ball well-suited to beginners practicing on all surfaces.



FUTSAL ELITE

The speciality futsal ball

Created especially for the indoor sport futsal, this heavy ball is also the perfect trick ball. Can be used indoors or on outdoor futsal fields.

THERMO BONDED

INNER CARCASS BLADDER

The restricted carcass bladder does not allow the ball to increase its size. It ensures the stability of the outer cover material and makes the ball last longer.

POLYESTER LINING

The polyester lining strengthens the bond between the bladder and the EVA foam layer in order to improve shape retention for a longer life.



HIGH PERFORMANCE FOAM LAYERING

The EVA foam layer creates a soft touch feel and greater bounce along with high reactive speed off the foot.

PERFECTLY ROUND PU SURFACE

The Thermo Bonded footballs are made with no thread and no stitching. It's made with Heat Infused Technology (HIT), that increases the shape conformity and makes the ball perfectly round.

HYBRID & KINETIC

WEIGHT STABILIZING BLADDER

The fiber winded SR bladder is used to achieve correct weight and strong foundation for the outer cover material.

POLYESTER LINING

The inner lining prevents the foam from cracking and tearing.



EXTRA SOFT FOAM LAYERING

The extra thick foam layer in the Hybrid / Kinetic balls ensures greater durability and life along with reduced impact and a soft feeling on the foot.

RESISTANT PU SURFACE

Still being machine stitched, the Hybrid/Kinetic balls are sealed by heat pressure making the balls last longer and keep them perfectly round.

MACHINE + HAND STITCHED

INNER BLADDER

Inner rubber bladder giving vivacity and bounce to the ball and securing minimum expansion over time.

POLYESTER LINING

Machine Stitched : It controls damage to the foam and helps close seams efficiently.
Hand stitched: 3 – 4 layers of polyester are used as a replacement for foam an improves shape retention and rebound.



LIMITED LAYER OF FOAM

With a very limited foam layer the regular balls are slightly harder than others. Hand stitched balls with no foam at all.

STITCHED PU SURFACE

Regular footballs are either machine stitched or hand stitched meaning the seams are not sealed. Still with only 10% water uptake.

FOOTBALL INFLATION GUIDE

PREPARATION

During wintertime we suggest to store the footballs at room temperature (20 – 25°C) for minimum 24 hours before the first inflation in order to secure optimal softness and shape.

Unfold the football with both hands and shake the bladder free.

VALVE OIL

Drip 1 – 2 drops of hummel valve oil into the valve. It is important that valve-oil is used at every inflation as it makes the valve seal properly.

INFLATE

Position the valve upwards and insert the inflation needle straight into the valve.

Always use a long pump needle to ensure the needle does not damage the valve or the bladder.

CHECK PRESSURE

- Inflate the ball to the recommended pressure.
- Recommended pressure is printed on the ball near the valve.
- Inflate slowly to allow the ball to gain its correct shape. Rapid inflation can damage the bladder.
- Use a pressure gauge to check the pressure of the ball.

FOOTBALL MAINTENANCE GUIDE

BEFORE EACH INFLATION

Always drip 1 – 2 drops of hummel valve oil into the valve before inflation to ensure that it seals properly.

STORAGE

Store the ball at reduced pressure in a dry ventilated room at 20 – 25°C.

CLEANING AND DRYING

After use clean the football in mild soapy water and rinse with water. Then wipe the ball off with a towel and let it fully dry in a dry, airy place at 20 – 25°C.

Never dry the ball on or near a heating device.



WEIGHT AND CIRCUMFERENCE OF FOOTBALLS

FOOTBALL	SIZE	CIRCUMFERENCE	WEIGHT	RECOMMENDED PRESSURE (BAR)
BLADE PRO	5	68,5 – 69 cm	425 – 435 g	0,8 – 1,0
STOM 2.0	5	68 – 69 cm	425 – 435 g	0,6
STORM TRAINER	5	68 – 69 cm	425 – 435 g	0,6
	4	64 – 65 cm	355 – 365 g	0,6
STORM TRAINER LIGHT	5	68 – 69 cm	345 – 355 g	0,6
	4	64 – 65 cm	320 – 330 g	0,6
	3	61 – 62 cm	300 – 310 g	0,6
STORM TRAINER ULTRA LIGHT	5	68 – 69 cm	285 – 320 g	0,6
	4	64 – 65 cm	280 – 300 g	0,6
	3	61 – 62 cm	280 – 300 g	0,6
CONCEPT PRO	5	68,5 – 69 cm	425 – 435 g	0,8 – 1,0
ELITE & PREMIER	5	68 – 69 cm	425 – 435 g	0,8
	4	64 – 65 cm	355 – 365 g	0,8
ENERGIZER	5	68 – 69 cm	425 – 435 g	0,6
	4	64 – 65 cm	355 – 365 g	0,6
	3	61 – 62 cm	325 – 335 g	0,6
ENERGIZER LIGHT	5	68 – 69 cm	345 – 355 g	0,6
	4	64 – 65 cm	320 – 330 g	0,6
	3	61 – 62 cm	300 – 310 g	0,6
ENERGIZER ULTRA LIGHT	5	68 – 69 cm	285 – 320 g	0,6
	4	64 – 65 cm	280 – 300 g	0,6
	3	61 – 62 cm	280 – 300 g	0,6
FUTSAL STORM	4	62 – 63 cm	415 – 425 g	0,6
	3	58 – 59 cm	380 – 400 g	0,6
FUTSAL STORM LIGHT	4	62 – 63 cm	355 – 365 g	0,6
	3	58 – 59 cm	320 – 330 g	0,6
FUTSAL ELITE	4	62 – 63 cm	415 – 425 g	0,6
	3	58 – 59 cm	380 – 400 g	0,6
	2	23 – 55 cm	350 – 380 g	0,6

BLADE PRO MATCH FB

- 100% PU
- Thermo bonded
- Textured microfiber PU
- Dual foam layers for extra softness
- Butyl carcass bladder for excellent shape and air-retention
- Minimal water uptake
- FIFA approved professional quality match ball for top players
- Suitable for grass and artificial ground

207524 : 5

DKK 699,95



9152
WHITE/BLACK/
GOLD



BLADE PRO TRAINER FB

- 100% PU
- Thermo bonded
- Textured PU
- Dual foam layers for extra softness
- Butyl carcass bladder for excellent shape and air-retention
- Minimal water uptake
- Training ball for top players
- Suitable for grass and artificial ground

207525 : 5

DKK 499,95



9152
WHITE/BLACK/
GOLD



STORM 2.0 FB

- 100% PU
- Hybrid
- Textured PU
- Dual foam layers for extra softness
- Winded bladder for excellent shape
- Minimal water uptake
- Match and training football for top players
- Suitable for grass and artificial ground

207519 : 5

DKK 399,95



9274
WHITE/BLACK/
GREEN



STORM TRAINER FB

- 100% PU
- Hybrid
- Kinetic
- Textured PU
- High density foam for extra softness
- Winded bladder for excellent shape
- Minimal water uptake
- Specially developed for training
- Suitable for grass, artificial and indoor

207522 : 4 5

DKK 279,95



9274
WHITE/BLACK/
GREEN



STORM TRAINER LIGHT FB

- 100% PU
- Hybrid
- Textured PU
- Dual foam layers for extra softness
- Winded bladder for excellent shape
- Minimal water uptake
- Specially developed for young players to finely tune their football skills
- Official size but lighter
- Suitable for grass, artificial and indoor

207520 : 3 4 5

DKK 199,95



9274
WHITE/BLACK/
GREEN



STORM TRAINER ULTRA LIGHT FB

- 100% PU
- Hybrid
- Textured PU
- Dual foam layers for extra softness
- Winded bladder for excellent shape
- Minimal water uptake
- Specially developed for kids to finely tune their football skills
- Official size but lighter
- Suitable for grass, artificial and indoor

207521 : 3 4 5

DKK 199,95



9274
WHITE/BLACK/
GREEN



CONCEPT PRO FB

- 100% PU
- Hand stitched
- Shiny Microfiber PU
- Butyl bladder for excellent shape and air-retention
- Unique 26 panel shape to provide excellent aerodynamics and roundness
- Minimal water uptake
- FIFA approved professional quality match ball top players
- Suitable for grass and artificial
- Warranty: 2 year stitch and shape guarantee

207514 : 5

DKK 699,95



9021
WHITE/BLACK/
SILVER



ELITE FB

- 100% PU
- Hand stitched
- Shiny PU
- Butyl bladder for excellent shape and air-retention
- High performance match and training ball
- Suitable for grass and artificial ground
- Warranty: 2 year stitch and shape guarantee

207515 : 4 5

DKK 349,95



9031
WHITE/BLACK/
RED



PREMIER FB

- 100% PU
- Hand stitched
- Shiny PU
- Butyl bladder for excellent shape and air-retention
- Match and training ball
- Suitable for grass and artificial ground
- Warranty: 2 year stitch and shape guarantee

207516 : 4 5

DKK 299,95



9047
WHITE/BLACK/
PINK



ENERGIZER FB

- 100% PU
- Machine stitched
- Shiny PU
- EVA foam for soft touch
- Winded bladder for excellent shape
- Good for play and games
- Suitable for all conditions

207511 : 3 4 5

DKK 149,95



9441
WHITE/BLACK/
BLUE



ENERGIZER LIGHT FB

- 100% PU
- Machine stitched
- Shiny PU
- EVA foam for soft touch
- Winded bladder for excellent shape
- Specially developed for young players to finely tune their football skills
- Official size but lighter
- Suitable for all conditions

207512 : 3 4 5

DKK 149,95



9441
WHITE/BLACK/
BLUE



ENERGIZER ULTRA LIGHT FB

- 100% PU
- Machine stitched
- Shiny PU
- EVA foam for soft touch
- Winded bladder for excellent shape
- Specially developed for young players to finely tune their football skills
- Official size but lighter
- Suitable for all conditions

207513 : 3 4 5

DKK 149,95



9441
WHITE/BLACK/
BLUE



FUTSAL STORM FB

- 100% PU
- Hybrid
- Kinetic
- Textured PU
- Special Futsal winded bladder
- Moderate bounce for optimal Futsal playing
- Training level football
- Suitable for indoor and outdoor Futsal pitches

207527 : 3 4

DKK 349,95



9274
WHITE/BLACK/
GREEN



FUTSAL STORM LIGHT FB

- 100% PU
- Hybrid
- Kinetic
- Textured PU
- Special Futsal winded bladder
- Moderate bounce for optimal Futsal playing
- Specially developed for kids and young player to finely tune their skills
- Suitable for Futsal pitches

207528 : 3 4

DKK 349,95



9274
WHITE/BLACK/
GREEN



FUTSAL ELITE FB

- 100% PU
- Hand stitched
- Matt PU
- Special Futsal butyl bladder
- Moderate bounce for optimal Futsal playing
- Match and training football for top players
- Suitable for indoor and outdoor Futsal pitches
- Warranty: 2 year stitch and shape guarantee

207526 : 2 3 4

DKK 299,95



9031
WHITE/BLACK/
RED



SHARE THE GAME SHARE THE GAME SHARE THE GAME
SHARE THE GAME SHARE THE GAME SHARE THE GAME

SHARE THE GAME SHARE THE GAME SHARE THE GAME
SHARE THE GAME SHARE THE GAME SHARE THE GAME



VOLLEYBALLS

- HIGH PERFORMANCE MATCH AND TRAINING BALLS
- SOFT SURFACE FOR A SMOOTH FEEL
- STABILITY AND CONTROL IN HIGH INTENSITY GAMEPLAY

With a soft-to-the-hand touch and a streamlined flight capability, hummel indoor volleyballs are designed to meet every player's toughest requirements. hummel volleyballs boast a highly engineered design that plays perfectly to the stability and control of the

ball when in high intensity gameplay, as well as in low intensity practice. Whether you are looking for a high performance match ball or a reliable training ball, hummel volleyballs solve the need.

HMLCONCEPT VB

- Synthetic leather cover PU 1.5 mm
- 18 panel hand sewn construction
- Latex bladder for extra softness
- Soft play technology

205073 : 5

DKK 349,95



9045
WHITE/
ARGENTINA BLUE



HMLENERGIZER VB

- Super soft TPU 3.0 mm
- 18 panel machine sewn construction
- Synthetic rubber bladder for better air retention
- Soft play technology

205072 : 5

DKK 199,95



9107
WHITE/
MARINE





HARE THE GAME SHARE THE GAME SHARE THE GAME SHARE THE GAME

SHARE THE GAME SHARE THE GAME SHARE THE GAME

SHARE THE GAME SHARE THE GAME SHARE THE GAME

Arpad

STERBIK

TELEKOM VESZPRÉM

FOOTWEAR



- DURABLE AND FUNCTIONAL PERFORMANCE SHOES
- FROM TOP-LEVEL PROFESSIONAL INDOOR SHOES TO SNEAKERS
- SPORT STYLE SHOES FOR AN EVERYDAY ACTIVE LIFESTYLE

From professional, top-level indoor shoes to stylish sneakers, hummel shoes provide comfort, performance and durability. The extensive series of indoor performance shoes is an elite range with styles for professionals and amateurs alike. The

classic football boots carry a strong legacy with plenty of football heritage, while the sport style sneaker collection is geared towards current lifestyle trends off the court or pitch.

HUMMEL ROOT PLAY

- PU/Mesh
- All-round indoor shoe
- Root outsole - Comfortable fit
- PIVOT
- Non-marking outsole
- Breathable upper

060167 : 3,5 - 15

DKK 599,95



2001
BLACK



ROOT PLAY ADULT

- PU/Textile
- All-round indoor shoe
- Root outsole - Comfortable fit
- PIVOT, Non-marking outsole
- Breathable upper

201531 : 3,5 - 15

DKK 399,95



8744
SARGASSO SEA



LIGA GK

- Suede/PU
- Full rubber outsole for ultimate grip and impact feel
- Enhanced comfort insole - Ergonomic insole by hummel
- Retro design
- Indoor

060089 : 36 - 48

DKK 499,95



2001
BLACK

3425
RIBBON RED

7666
PEACOAT

8604
HERITAGE BLUE



OLD SCHOOL STAR FG

- Microfiber leather / PU
- Old school classic football boot
- Round studs for optimal stability and grip

201087 : 40 - 45

DKK 699,95



2001
BLACK



MINNEAPOLIS MONO BREAKER

- Mesh upper
- Breaker outsole
- Ortholite insock
- TPU overlays

207163 : 36 - 47

DKK 599,95



2001
BLACK

9001
WHITE



ACTUS TRAINER

- Knit and breathable upper
- Aerotech super-cushioning EVA insole
- Aerotech EVA outsole

203661 : 36 - 48

DKK 399,95



2001
BLACK

7666
PEACOAT

8382
GRAPE SHAKE

9001
WHITE



KIEL

- MESH UPPER
- LIGHT WEIGHT
- SEASONAL COLORWAYS

206730 : 36 - 46

DKK 299,95



2001
BLACK

2393
BLACK/
GREY MELANGE

7003
NAVY

9001
WHITE



NIELSEN SANDAL

- A lightweight, dual density blown EVA slipper
- Comfortable fit and feel
- Classic, sporty design
- Easy to slip on and off
- Perfect for allround use

206571 : 30 - 47

DKK 199,95



2001
BLACK

7003
NAVY

9001
WHITE



LARSEN SLIPPER VC

- Injection EVA
- One piece lightweight EVA foam midsole/outsole
- Water resistant
- Classic old schoold design
- Synthetic upper with soft touch lining for extra comfort
- Adjustable velcro strap
- Should not be kept in sun or +50 degrees Celsius

060406 : 36 - 48

DKK 199,95



2001
BLACK

7648
DRESS BLUE/
WHITE



LARSEN SLIPPER

- Injection EVA
- One piece lightweight EVA foam midsole/outsole
- Water resistant
- Classic old school design
- Synthetic upper with soft touch lining for extra comfort
- Should not be kept in sun or +50 degrees Celsius

060405 : 36 - 48

DKK 199,95



2001
BLACK

7648
DRESS BLUE/
WHITE



LARSEN SLIPPER SMU

- Injection EVA
- One piece lightweight EVA foam midsole/outsole
- Water resistant
- Classic old school design
- Synthetic upper with soft touch lining for extra comfort
- Should not be kept in sun or +50 degrees Celsius

060437 : 36 - 48

DKK 199,95



3062
TRUE RED

6140
EVERGREEN

7045
TRUE BLUE

8540
OMBRE BLUE



INDEX

Style No.	Style Name	Page
003636 103636	CORE SS POLY JERSEY	50
003649	CORE WOMENS SS JERSEY	51
003651 103651	CORE BASKET JERSEY	52
003746	HUMMEL FIRST COMPRESSION SS M	77
003755 103755	CORE STRIPED SS JERSEY	51
003756 103756	CORE POLYESTER TEE	52
004087 104087	ESSENTIAL GK JERSEY	70
004329	HUMMEL FIRST COMPRESSION LS M	77
004615 104615	CORE LS POLY JERSEY	50
005002 105002	FUNDAMENTAL TRAINING BIB	119
010815 110815	ESSENTIAL GK SHORTS	70
010816 110816	ESSENTIAL GK SHORTS W PADDING	70
011083 111083	CORE POLY SHORTS	53
011086	CORE WOMENS SHORTS	53
011087 111087	CORE BASKET SHORTS	53
011361	HUMMEL FIRST COMPRE M S TIGHTS	77
011362	HUMMEL FIRST COMPRE L M TIGHTS	77
022030	3-Pack Basic Sock	113
022129	ANKLE SOCK SMU	113
022140	FUNDAMENTAL 3-PACK SOCK	113
031198 131198	CLASSIC GK PANT	70
032165 132165	CORE FOOTBALL PANT	57
032173 132173	CORE POLY PANT	57
032181	CORE ALL-WEATHER PANT	58
032182	CORE BENCH PANTS	58
036893 136893	CORE POLY JACKET	56
036895 136895	CORE 1/2 ZIP SWEAT	56
040918	HUMMEL BALL NET	126
041441	LIGHT WEIGHT PLAYER GLOVES	117
041442	COLD WINTER PLAYER GLOVES	117
060089	LIGA GK	152
060167	HUMMEL ROOT PLAY	152
060405	LARSEN SLIPPER	155
060406	LARSEN SLIPPER VC	154
060437	LARSEN SLIPPER SMU	155
080822 180822	CORE SPRAY JACKET	58
089066	BASIC CAP	116
098153	3-PACK HEADBAND 17-18	119
099000	HUMMEL BALL PUMP	119
099014	OLD SCHOOL BIG WRISTBAND	118
099015	OLD SCHOOL SMALL WRISTBAND	118
099164	OLD SCHOOL CAPTAINS BAND	119
099296	HUMMEL RESIN NATURAL SMALL	121
099297	HUMMEL RESIN GEL SMALL	121
099298	HUMMEL RESIN REMOVER	120
099299	HUMMEL VALVE OIL	120
099302	HUMMEL RESIN NATURAL BIG	121
099303	HUMMEL RESIN GEL BIG	121
200004 200005	TECH MOVE JERSEY S/S	14
200006	TECH MOVE JERSEY WOMAN S/S	15
200007 200048	TECH MOVE JERSEY L/S	14
200008 200009	TECH MOVE POLY SHORTS	14
200010	TECH MOVE POLY SHORTS WOMAN	15
200011 200012	TECH MOVE HALF ZIP SWEATSHIRT	16
200013 200014	TECH MOVE POLY ZIP JACKET	16
200015 200016	TECH MOVE POLY PANTS	17
200017 200018	TECH MOVE POLY HOODIE	16
200019 200020	TECH MOVE ZIP HOOD	16
200021 200022	TECH MOVE FOOTBALL PANTS	17
200025 200026	TECH MOVE TRAINING SHORTS	17
200027 200028	TECH MOVE ALL WEATHER JACKET	18
200029	TECH MOVE BENCH JACKET	18
200626	HMLNELLY ZIP JACKET	99
200627	HMLNATHAN ZIP JACKET	98
200628	HMLNELLY PANTS	99
200629	HMLNATHAN PANTS	98
200646 201000	TECH MOVE FUNCTIONAL LIGHT WEIGHT JACKET	18
201087	OLD SCHOOL STAR FG	152
201160	PRO FOOTBALL SOCK 17-18	112
201531	ROOT PLAY ADULT	152
202613	TEAM TROLLEY	125

Style No.	Style Name	Page
202636 202637	HUMMEL FIRST SEAMLESS JERSEY S/S	78
202638 202639	HUMMEL FIRST SEAMLESS JERSEY L/S	78
202640 202641	HUMMEL FIRST SEAMLESS TIGHTS	78
202642 202643	HUMMEL FIRST SEAMLESS SHORT TIGHTS	78
202644	HUMMEL FIRST SEAMLESS JERSEY S/S WOMAN	79
202645	HUMMEL FIRST SEAMLESS JERSEY L/S WOMAN	79
202647	HUMMEL FIRST SEAMLESS BRA WOMEN	79
202648	HUMMEL FIRST SEAMLESS TIGHTS WOMEN	79
202649	HUMMEL FIRST SEAMLESS SHORT TIGHTS WOMEN	79
202650	HUMMEL FIRST SEAMLESS TANK TOP WOMAN	79
202941	HMLNATHAN ZIP JACKET	98
202942	HMLNATHAN PANTS	98
203041	HMLNELLY ZIP JACKET	99
203042	HMLNELLY PANTS	99
203404	ELEMENT FOOTBALL SOCK FOOTLESS	112
203405	ELITE COMPRESSION SOCK	115
203435	CORE POLY TEE WOMAN S/S	52
203436 203437	CORE TEAM JERSEY S/S	50
203438	CORE TEAM JERSEY WOMAN S/S	51
203439	CORE POLY HALF ZIP SWEATSHIRT WOMAN	56
203440	HMLGO COTTON T-SHIRT WOMAN S/S	86
203441 203442	CORE MICRO ZIP JACKET	56
203443 203444	CORE MICRO PANT	57
203445	CORE TRAINING POLY PANT	57
203446 204172	CORE INDOOR GK COTTON PANT	55
203447	CORE FUNCTIONAL POLO	54
203448	CORE FUNCTIONAL POLO WOMAN	54
203505 203506	HMLGO COTTON SWEATSHIRT	88
203507	HMLGO COTTON SWEATSHIRT WOMAN	88
203508 203509	HMLGO COTTON HOODIE	88
203510	HMLGO COTTON HOODIE WOMAN	88
203511 203512	HMLGO COTTON LOGO HOODIE	89
203513 203514	HMLGO COTTON LOGO T-SHIRT S/S	86
203515 203516	HMLGO COTTON LOGO SWEATSHIRT	89
203517	HMLGO COTTON LOGO HOODIE WOMAN	89
203518	HMLGO COTTON LOGO T-SHIRT WOMAN S/S	86
203519	HMLGO COTTON LOGO SWEATSHIRT WOMAN	89
203520 203521	HMLGO COTTON POLO	87
203522	HMLGO COTTON POLO WOMAN	87
203525 204051	CORE HIPSTER WOMAN	55
203526 203527	CORE POLY COACH SHORTS	54
203530 203531	HMLGO COTTON PANT	90
203532	HMLGO COTTON BERMUDA SHORTS WOMAN	87
203533 204053	HMLGO COTTON BERMUDA SHORTS	87
203566 203567	HMLGO COTTON T-SHIRT S/S	86
203596	HMLSTORM PRO 2.0	134
203597	HMLSTORM PRO	134
203598	HMLARENA	136
203599	HMLELITE GRIP	135
203600	HMLELITE	135
203601	HMLCONCEPT	134
203602	HMLPREMIER	135
203603	HMLKIDS	137
203604	HMLBEACH	136
203605	HMLSPUME KIDS	137
203606	HMLEASY KIDS	137
203607	HMLSTREET PLAY	136
203661	ACTUS TRAINER	153
203785	HMLCONCEPT PRO	134
204012	CORE SPORTS BAG	124
204043	ELITE INDOOR SOCK LOW	114
204044	ELITE INDOOR SOCK HIGH	114
204045	ELEMENT INDOOR SPORT SOCK 2 PACK	115
204046	ELEMENT FOOTBALL SOCK	112
204156	hmlENERGIZER HB	136
204157	hmlPREMIER GRIP HB	135
204170 204171	CORE BENCH JACKET	58
204173	HMLGO COTTON PANTS WOMAN	90
204230 204231	HMLGO COTTON ZIP HOODIE	90
204232	HMLGO COTTON ZIP HOODIE WOMAN	90
204300 204301	CORE TIGHTS WOMAN	55

Style No.	Style Name	Page
204500 204501	HML FIRST PERFORMANCE JERSEY S/S	80
204502 204503	HML FIRST PERFORMANCE JERSEY L/S	80
204504 204505	HML FIRST PERFORMANCE TIGHT SHORTS	80
204513 204547	HML FIRST PERFORMANCE TIGHTS	80
204514	HML FIRST PERFORMANCE WOMEN JERSEY S/S	81
204515	HML FIRST PERFORMANCE WOMEN JERSEY L/S	81
204516	HML FIRST PERFORMANCE WOMAN HIPSTER	81
204517	HML FIRST PERFORMANCE WOMEN TIGHTS	81
204602	hmlAUTHENTIC PRO JERSEY S/S	30
204603	hmlAUTHENTIC PRO WOVEN SHORTS	30
204605	hmlAUTHENTIC PRO HALF ZIP SWEAT	31
204606	hmlAUTHENTIC PRO JACKET	31
204607	hmlAUTHENTIC PRO FOOTBALL PANT	31
204614	hmlAUTHENTIC PRO ZIP HOODIE	31
204919 204920	hmlAUTHENTIC POLY JERSEY S/S	32
204921	hmlAUTHENTIC POLY JERSEY WOMAN S/S	33
204922 204923	hmlAUTHENTIC POLY JERSEY L/S	32
204924 204925	hmlAUTHENTIC POLY SHORTS	32
204926	hmlAUTHENTIC POLY SHORTS WOMAN	33
204927 204928	hmlAUTHENTIC HALF ZIP SWEATSHIRT	34
204929	hmlAUTHENTIC HALF ZIP SWEATSHIRT WOMAN	34
204930 204931	hmlAUTHENTIC POLY HOODIE	36
204932	hmlAUTHENTIC POLY HOODIE WOMAN	36
204933 204934	hmlAUTHENTIC TRAINING PANT	35
204935 204936	hmlAUTHENTIC TRAINING JACKET	39
204937 204938	hmlAUTHENTIC POLY ZIP HOODIE	36
204939	hmlAUTHENTIC POLY ZIP HOODIE WOMAN	36
204959	CORE GYM BAG	125
204960	hmlREFEREE JERSEY S/S	71
204961	hmlREFEREE POLY SHORTS	71
205072	hmlENERGIZER VB	148
205073	hmlCONCEPT VB	148
205280 205281	CORE GK SET	71
205345	hmlWATERBOTTLE	120
205346	hmlWATERBOTTLE CARRIER	120
205347	hmlRE-GRIP	120
205360 205361	hmlAUTHENTIC WIND BREAKER	39
205362 205363	hmlAUTHENTIC BENCH JACKET	39
205364 205365	hmlAUTHENTIC ALL-WEATHER JACKET	39
205366 205367	hmlAUTHENTIC POLY ZIP JACKET	34
205368	hmlAUTHENTIC WOMEN POLY ZIP JACKET	34
205369 205370	hmlAUTHENTIC POLY PANT	35
205371 205372	hmlAUTHENTIC 3/4 PANT	35
205373 205374	hmlAUTHENTIC TRAINING SWEAT	37
205375 205376	hmlAUTHENTIC MICRO JACKET	37
205377 205378	hmlAUTHENTIC MICRO PANT	37
205379 205380	hmlAUTHENTIC TRAINING TEE	38
205382	hmlAUTHENTIC FUNCTIONAL POLO	38
205384	hmlAUTHENTIC WOMAN FUNCTIONAL POLO	38
205385 205386	hmlAUTHENTIC SWEAT PANT	37
205388 205389	hmlAUTHENTIC TRAINING SHORT	38
205487 205488	HMLCIMA HOODIE	92
205489	hmlCIMA HOODIE WOMAN	93
205493 205494	HMLCIMA ZIP JACKET	92
205495	hmlCIMA ZIP JACKET WOMAN	93
205496 205497	hmlCIMA PANTS	92
205498	hmlCIMA PANTS WOMAN	93
205499 205500	HMLCIMA SHORTS	91
205501	hmlCIMA SHORTS WOMAN	91
205505 205506	hmlCIMA T-SHIRT	91
205507	hmlCIMA T-SHIRT WOMAN	91
205888	CORE BALL BACK PACK	125
206262	hmlSELBY TAPERED PANTS	101
206266	hmlLESSI TAPERED PANTS	101
206272	hmlTROPPEL SWEATSHIRT	100
206273	hmlTROPPEL TAPERED PANTS	100
206274	hmlTROPPEL SHORTS	100
206424	hmlSIGGE T-SHIRT S/S	97
206488 207689	hmlASTON ZIP HOODIE	97
206490 207690	hmlASTON TAPERED PANTS	97
206536	hmlAUTHENTIC PRO SEAMLESS JERSEY S/S	30

Style No.	Style Name	Page
206571	NIELSEN SANDAL	154
206681	hmlNORTH HYBRID JACKET	102
206682	hmlNORTH HYBRID JACKET WOMAN	103
206683	hmlNORTH SHELL JACKET	104
206684	hmlNORTH SHELL JACKET WOMAN	105
206685 206696	hmlNORTH SOFTSHELL JACKET	102
206686	hmlNORTH SOFTSHELL JACKET WOMAN	103
206687 206695	hmlNORTH QUILTED HOOD JACKET	102
206688	hmlNORTH QUILTED HOOD JACKET WOMAN	103
206689	hmlNORTH PARKA JACKET	104
206690	hmlNORTH PARKA JACKET WOMAN	105
206691	hmlNORTH WAISTCOAT	104
206692	hmlNORTH WAISTCOAT WOMAN	105
206693	hmlNORTH FULL ZIP FLEECE JACKET	102
206694	hmlNORTH FULL ZIP FLEECE JACKET WOMAN	103
206730	KIEL	153
206921 206922	hmlMOVE CLASSIC HOODIE	94
206923	hmlMOVE CLASSIC HOODIE WOMAN	95
206924 206925	hmlMOVE CLASSIC ZIP JACKET	94
206926	hmlMOVE CLASSIC ZIP JACKET WOMAN	95
206927 206928	hmlMOVE CLASSIC PANTS	94
206929	hmlMOVE CLASSIC PANTS WOMAN	95
206930 206931	hmlMOVE CLASSIC SHORTS	94
206932 206933	hmlMOVE T-SHIRT	96
206934	hmlMOVE T-SHIRT WOMAN	96
206935	hmlMOVE POLO	96
206937	hmlMOVE POLO WOMAN	96
206952	hmlMOVE NECK TUBE	95
206953	hmlMOVE BEANIE	95
206996	CORE BACK PACK	125
207140	CORE FOOTBALL BAG	124
207141	CORE TEAM BAG	124
207142	CORE TROLLEY	124
207144	CORE HANDBALL BAG	126
207145	CORE BALL BAG	126
207147	URBAN DUFFEL BAG	127
207148	URBAN SPORTS BACK PACK	127
207149	URBAN LAP TOP BACK PACK	127
207150	URBAN BUM BAG	128
207151	URBAN SHOULDER BAG	128
207152	URBAN LAP TOP SHOULDER BAG	128
207153	LIFESTYLE WEEKEND BAG	129
207154	LIFESTYLE TOILETRY BAG	129
207155	LIFESTYLE BACK PACK	129
207156	LIFESTYLE LAP TOP SHOULDER BAG	129
207157	LIFESTYLE BUM BAG	129
207163	MINNEAPOLIS MONO BREAKER	153
207511	ENERGIZER FB	146
207512	ENERGIZER LIGHT FB	146
207513	ENERGIZER ULTRA LIGHT FB	146
207514	CONCEPT PRO FB	145
207515	ELITE FB	145
207516	PREMIER FB	145
207519	STORM 2.0 FB	143
207520	STORM TRAINER LIGHT FB	144
207521	STORM TRAINER ULTRA LIGHT FB	144
207522	STORM TRAINER FB	144
207524	BLADE PRO MATCH FB	143
207525	BLADE PRO TRAINER FB	143
207526	FUTSAL ELITE FB	147
207527	FUTSAL STORM FB	147
207528	FUTSAL STORM LIGHT FB	147
207687	hmlSELBY ZIP HOODIE	101
208409	hmlTROPPEL ZIP JACKET	100
208410	hmlLESSI ZIP JACKET	101
208804	HUMMEL SMALL TOWEL	118
208805	HUMMEL LARGE TOWEL	118
208914	HUMMEL TRAINING HAT	116
208916	HUMMEL TRAINING BEANIE	116
208917	HUMMEL NECK TUBE	117

PRINT GUIDE



- DO** take extra care with the print press
- DO** adjust the machine settings to the correct pressure per cm² and printing time
- DO** have the correct temperature settings as supplied in manual [max temperature 140°C]
- DO** use rubber pad for the garment's print area to lay on

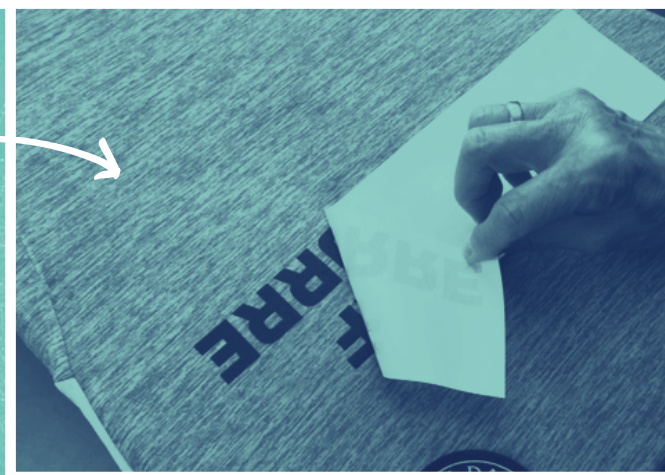


- DO NOT** heat directly onto any existing print on the garment
- DO NOT** use either paper or Teflon sheet to protect existing print from the heat plate
- DO NOT** heat garment for any longer than 15 seconds



IMPORTANT! Providing that these guidelines are followed correctly, you should have a perfectly printed garment with no damage done to the existing print.

hummel is not liable for any damage made to the existing print/logo, should it be reheated and/or if the instructions are not followed correctly. This can damage existing print or logo leading to peeling-off or cracking.



SIZE CHART

Textile Children

EU year/cm	4/104	5/110	6/116	7/122	8/128	9/134	10/140	11/146	12/152	13/158	14/164	15/170	16/176
US year	4Y		6Y		YS/8Y		10Y		YM/12Y		14Y		YL/16Y
ASIA cm	104	110	116	122	128	134	140	146	152	158	164	170	176

Textile Adults

EU	XS	S	M	L	XL	XXL	XXXL	XXXXL
US	XXS	XS	S	M	L	XL	XXL	XXXL
ASIA	S	M	L	XO	XXO	XXXO	XXXXO	XXXXXO

Footwear Children

UK	4	5	6	7	8	9	10	11	11½	12	13	1	2	2½	3½	4	5
US	6	7	8	9	9½	10	11	12	12½	13	1	2	2½	3½	4	5	6
EU	22	23	24	25	26	27	28	29	30	31	32	33	34	35	36	37	38
JAPAN	12	13	14	15	16	16½	17	17½	18	19	20	21	21½	22	22½	23	24
KOREA													215	220	225	230	240

Footwear Adult

UK	3½	4	4½	5	5½	6	6½	7	7½	8	8½	9	9½	10	10½	11	11½	12	12½	13	14	15	
USM	4½	5	5½	6	6½	7	7½	8	8½	9	9½	10	10½	11	11½	12	12½	13	13½	14	15	16	
USL	5	5½	6	6½	7	7½	8	8½	9	9½													
EU	36	37	37½	38	38½	39	40	40½	41	42	42½	43	44	44½	45	46	46½	47	48	48½	49½	51	
JAPAN	22½	23	23½	24	24½	25	25½	26	26½	27	27½	28	28½	29	29½	30	30½	31	31½	32	32½	33	
KOREA	225	230	235	240	245	250	255	260	265	270	275	280	285	290	295	300	305	310	315				



FROM CRADLE TO CRADLE

A SUSTAINABLE SPORT CATALOGUE

This Sport Catalogue is a cradle-to-cradle certified product.

This means that you turn the pages of a guaranteed sustainably printed product, which is 100% biologically decomposable and completely free of any toxic chemicals and heavy metals. It also means that in producing this catalogue, we have reused the earth's resources in a natural circular process, leaving no harmful waste materials, which are dangerous to people or the environment. In other words, you could bury this catalogue in your garden and even

plant vegetables on top without damaging the environment or your health!

The Cradle-to-Cradle certification is a holistic environmental certification which guarantees that a product does not pollute or eat into the earth's limited resources but enters nature's own circuit. In line with our Company Karma philosophy, we encourage these new environmentally responsible and circular processes, securing a healthy world for future generations, from cradle to cradle.



SILVER

PurePrint® by KLS

Produced 100% biodegradable
by KLS PurePrint A/S, binding excluded

SPORT19 - ENG TEXT, DKK PRICES

